

Change to Visual Appearance and Product Specification of Cree® XLamp® XT-E LEDs

PCN-CM086

Announcement Date: June 14, 2016

Implementation Date: Immediately

This notification applies to the following Cree product series:

XTEAWT-0x-xxxx-xxxxxxxxxx

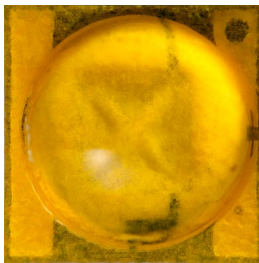
XTEARY-xx-xxxx-xxxxxxxxxx

No customer action is required.

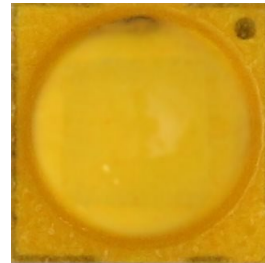
CHANGE DESCRIPTION - VISUAL APPEARANCE

Cree will begin shipment of XLamp® XT-E White LEDs with a different visual appearance. Examples of the newly qualified XLamp XT-E LEDs with improved optical uniformity characteristics are shown in the pictures below.

Current Appearances



New Appearance



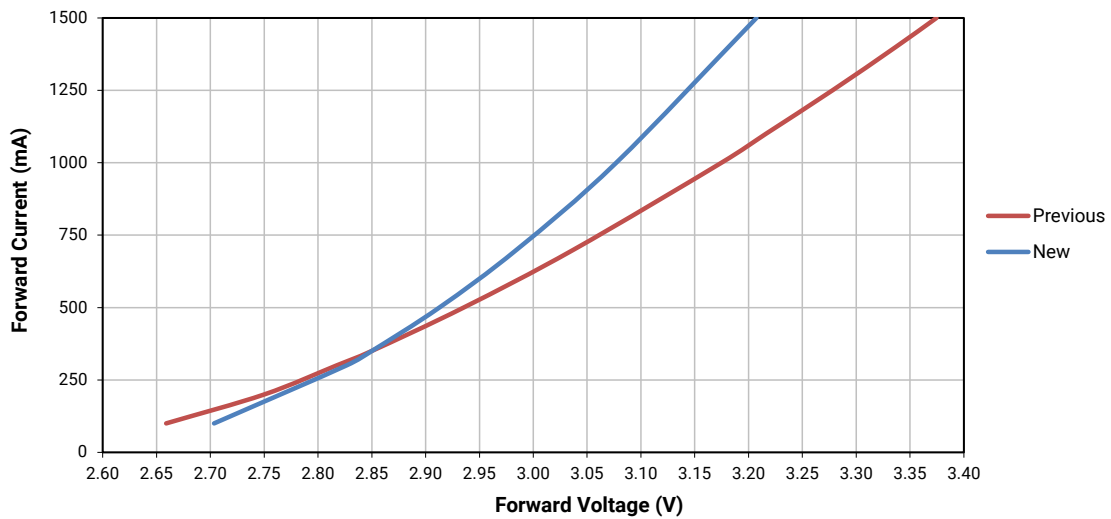
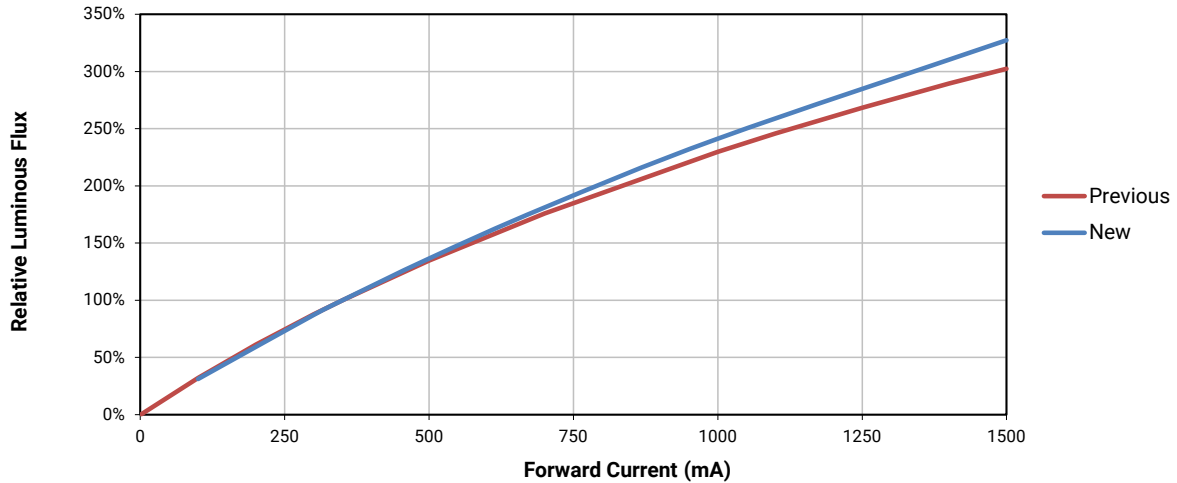
CHANGE DESCRIPTION - PRODUCT SPECIFICATION

In order to make the product specification better match the performance of current production, Cree is making two changes to the product specification of XLamp XT-E LEDs.

1. Cree is lowering the maximum forward voltage for XLamp XT-E White and Royal Blue LEDs as shown in the table below.

	Current Value	New Value
Maximum Forward Voltage	3.4 V	3.1 V

2. Cree is updating the relative flux versus current and current versus voltage graphs for XLamp XT-E White LEDs. The comparison between previous and new curves are shown below.



IMPACT OF CHANGES

Beginning immediately, Cree will begin shipment of XLamp XT-E White LEDs with a new visual appearance. Each reel of XLamp XT-E LEDs will contain LEDs with either one of the current visual appearances or the new visual appearance. Customers may receive shipments containing both the current and new appearances in the same shipment.

Beginning immediately, Cree will begin production of XLamp XT-E LEDs with the lower maximum forward voltage specification. No customer action is required.