

Cree® XLamp® Product Change Notification

Customer Name: XLamp customers

PCN Reference Number: CREE-PCN-0641

Date Issued: 8/3/2018

Please be advised that Cree has qualified a Major Change to XLamp® XP-G3 White, XP-G3 Royal Blue, XP-E High Efficiency White, XT-E White and XT-E Royal Blue LEDs and that we will begin shipping the affected product with the change 90 days after the PCN Issue Date.

Please review the additional PCN information below.

Affected Product

Table 1 provides a list of products initially affected by this Major change:

Table 1 Affected Products List

Cree Part Number	Customer Part Number
XPGDWT-xx-xxxx-xxxxx	
XPGDRY-xx-xxxx-xxxxx	
XPEHEW-xx-xxxx-xxxxx	
XTEAWT-xx-xxxx-xxxxxxxxx	
XTEARY-xx-xxxx-xxxxxxxxx	

Description of the Change

This change removes the redundant solder mask on the back side of XLamp LEDs. The LEDs listed in Table 1 will be the first to be changed. Over time this change will be applied to other XLamp LEDs, including XHP, XM, XP, XQ and XR series LEDs.

Reason for the Change

This change removes a processing step from the construction of XLamp LEDs.

Change Impact on Form, Fit, Function, or Reliability

This change results in a change in the appearance of the back side of the LEDs affected. This change has no impact on the fit, function, solderability, or reliability of these LEDs.

Examples of the different visual appearances of XP-G3, XT-E and XP-E HEW LEDs are shown in the pictures below.

XP-G3 White

Current Appearance



New Appearance



XP-G3 Royal Blue

Current Appearance



New Appearance



XT-E White

Current Appearance



New Appearance



XT-E Royal Blue

Current Appearance

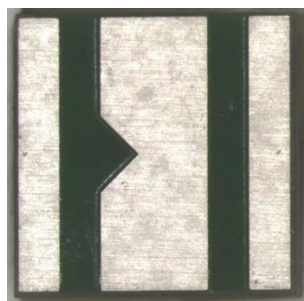


New Appearance

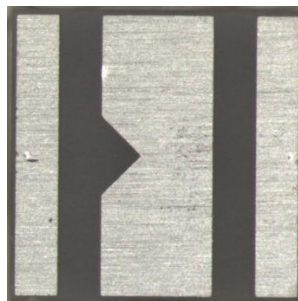


XP-E HEW

Current Appearance



New Appearance



Cree Contact Information

If you have any questions regarding this PCN please contact:

Table 2 PCN Contact

Cree Contact:	Customer Service
Cree Contact E-Mail:	productsupport@cree.com
Cree Contact Phone:	US toll free: +1 866-924-3645 Outside the US: +1 919-287-7888
Cree Contact Fax Number:	
Address:	4600 Silicon Drive Durham, NC 27703