

Cree® XLamp® XB-D LED Product Change Notification

Customer Name: XB-D Customers

PCN Reference Number: CREE-PCN-0750

Date Issued: February 5, 2019

Please be advised that Cree has qualified a Major Change to XLamp® XB-D white and royal blue LEDs and that we will begin shipping the affected products with the change 90 days after the PCN Issue Date.

Please review the additional PCN information below.

Affected Product

Table 1 provides a list of products affected by this Major change:

Table 1 Affected Products List

Cree Part Number
XBDAWT-xx-xxxx-xxxxxxxxxx
XBDROY-xx-xxxx-xxxxxxxxxx

Description of the Change

Cree is qualifying other die in addition to the die currently used in XB-D white and royal blue LEDs.

Reason for the Change

This change is being made to take advantage of the latest LED technology.

Change Impact on Form, Fit, Function, or Reliability

Height Change

The height range on the datasheet for color regions E6-E8, F6-F8, and Z6-Z8 will be changed to 1.97 ± 0.16 mm. For other color regions, the height range on the datasheet remains unchanged.

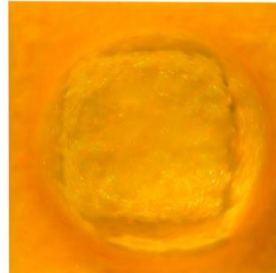
Visual Change

This change results in a change in the appearance of the XB-D white and royal blue LEDs. Examples of the different visual appearances of the LEDs are shown in the pictures below.

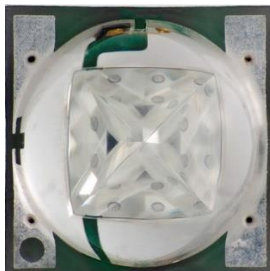
XB-D White Current Appearance



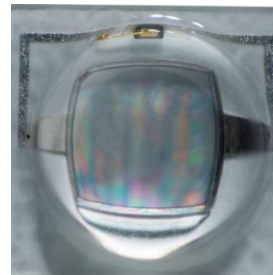
XB-D White New Appearance



XB-D Royal Blue Current Appearance



XB-D Royal Blue New Appearance



This change has no impact on the fit, function, solderability, or reliability of these LEDs.

Cree Contact Information

If you have any questions regarding this PCN please contact:

Table 2 PCN Contact

Cree Contact:	Customer Service
Cree Contact E-Mail:	csledlighting@cree.com
Cree Contact Phone:	919-407-7700
Cree Contact Fax Number:	919-407-5451
Address:	4600 Silicon Dr. Durham, NC 27703