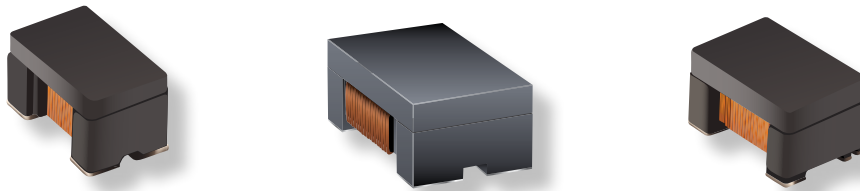




# PRODUCT CHANGE NOTIFICATION

## MAGNETICS



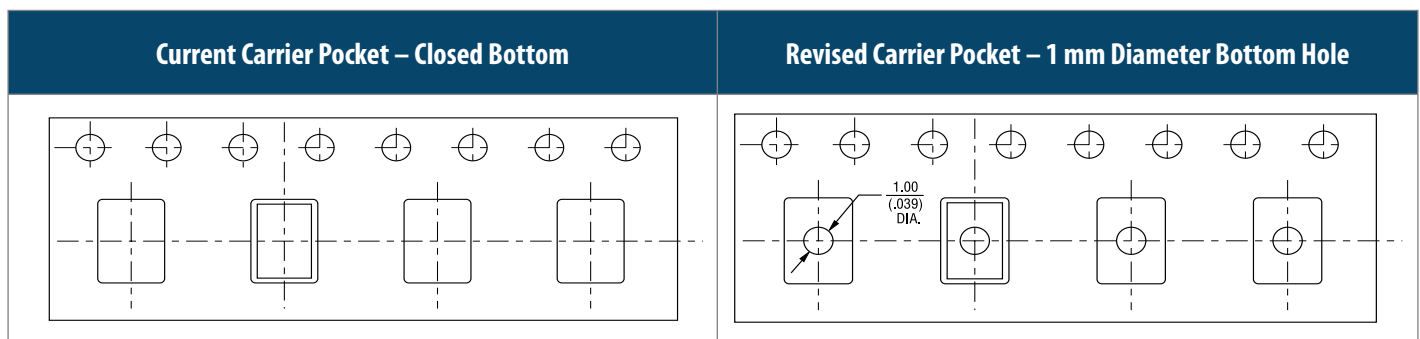
## Select Model SRF and SM Series Common Mode Chip Inductors

### Carrier Tape Design Change

Riverside, California – February 24, 2020 – Effective immediately, Bourns is changing the carrier tape design of select SRF and SM Series Common Mode Chip Inductors to include a 1 mm diameter hole at the bottom of the carrier pocket.

The carrier pocket currently has a closed bottom. In some cases, when the carrier tape is peeled away during assembly, the process itself can generate a level of electrostatic discharge high enough to attract small components remaining in the pocket which can interfere with the component picking process. Research shows that the open hole at the bottom of the carrier pocket can dramatically reduce the static voltage to a level that will not interfere with the assembly process. A list of affected part numbers is included on the following page.

The change in carrier tape design has no effect on the component. The form, fit, function, reliability and quality of the inductor remain unchanged.



Implementation dates are as follows:

First date code using the above changes: **2007**

If you have any questions or need additional information, please feel free to contact [Customer Service/Inside Sales](#).

*Users should verify that the described changes will not impact the performance of the product in their specific applications.*

IC1921A

Affected Part Numbers				
<b>SRF1209A Series</b>	<a href="#">SRF2012AA Series</a>	<a href="#">SRF3216A Series</a>	<b>SRF3225TAB Series</b>	<b>SM453229 Series</b>
SRF1209A-500Y	SRF2012A-670YA	SRF3216A-900Y	SRF3225TAB-101Y	<a href="#">SM453229-381N7Y</a>
SRF1209A-600Y	SRF2012A-900YA	SRF3216A-121Y	SRF3225TAB-201Y	SM453229A-381N7Y
SRF1209A-900Y	SRF2012A-121YA	SRF3216A-161Y	<b>SRF3225TABR Series</b>	SM453229-381N7T
<a href="#">SRF2012A Series</a>	SRF2012A-161YA	SRF3216A-221Y	SRF3225TABR-101Y	<a href="#">SM453229-231N7Y</a>
SRF2012-300YA	SRF2012A-181YA	SRF3216A-261Y	SRF3225TABR-201Y	SM453229-231N7T
SRF2012-670YA	SRF2012A-201YA	SRF3216A-361Y	<b>SRF3225TABA Series</b>	<b>SM453230 Series</b>
SRF2012-900YA	SRF2012A-221YA	SRF3216A-601Y	SRF3225TABA-101Y	SM453230-181N7Y
SRF2012-121YA	SRF2012A-261YA	SRF3216A-102Y	SRF3225TABA-201Y	SM453230-121N7T
SRF2012-161YA	SRF2012A-301YA	SRF3216A-222Y	<b>SRF3225TAP Series</b>	SM453230-181N7T
SRF2012-181YA	SRF2012A-361YA	<b>SRF3225TA Series</b>	SRF3225TAP-510Y	<b>SRF3532 Series</b>
SRF2012-201YA	<a href="#">SRF3216 Series</a>	SRF3225TA-110Y	SRF3225TAP-102Y	SRF3532-750T03
SRF2012-221YA	SRF3216-900Y	SRF3225TA-220Y	<a href="#">SRF4532 Series</a>	<b>SRF3416 Series</b>
SRF2012-261YA	SRF3216-161Y	SRF3225TA-510Y	SRF4532-1R0Y	SRF3416-600T02
SRF2012-301YA	SRF3216-221Y	SRF3225TA-101Y	SRF4532-110Y	<b>SRF4632A Series</b>
SRF2012-361YA	SRF3216-261Y	<b>SRF3225TAC Series</b>	SRF4532-220Y	SRF4632A-101T
SRF2012-371YA	SRF3216-601Y	SRF3225TAC-110Y	SRF4532-510Y	SRF4632A-161T
SRF2012-501YA	SRF3216-102Y	SRF3225TAC-220Y	SRF4532-101Y	
SRF2012-671YA	SRF3216-222Y	SRF3225TAC-510Y	<b>SM3532 Series</b>	
SRF2012-901YA		SRF3225TAC-101Y	SM3532-181N7Y	