

Thursday 30<sup>th</sup> June, 2022

Dear Customer,

**Re: Product Change Notification for Harwin product.**

Product in the C90-3106F range has been subject to dimensional changes relating to the supplied rubber bushing.



The following parts are affected:

- C90-3106F10SL-3P
- C90-3106F10SL-4P
- C90-3106F12S-3P
- C90-3106F10SL-3S
- C90-3106F10SL-4S
- C90-3106F12S-3S

This change was actioned during Q4 2021 – no PCN was triggered or released at this time, so you may have already received stock to the new design. The change was to the size of the inner bore of the bushing.

|                              | <b>Inner bore diameter</b> | <b>Supplied Rubber Bushing (also available separately)</b> |
|------------------------------|----------------------------|--|
| Before the change in Q4 2021 | 6.60mm nominal             | C90-3420-5   |
| After the change in Q4 2021  | 5.60mm nominal             | C90-3420-4   |

If you require the larger bore rubber bushing, please order the C90-3420-5 as a separate component.

If you have any further questions regarding this letter, please do not hesitate to contact us.

Yours faithfully,

The Product Change Team  
[technical@harwin.com](mailto:technical@harwin.com)

# Customer Information Sheet

DRAWING No.: C90-3420-X

IF IN DOUBT - ASK

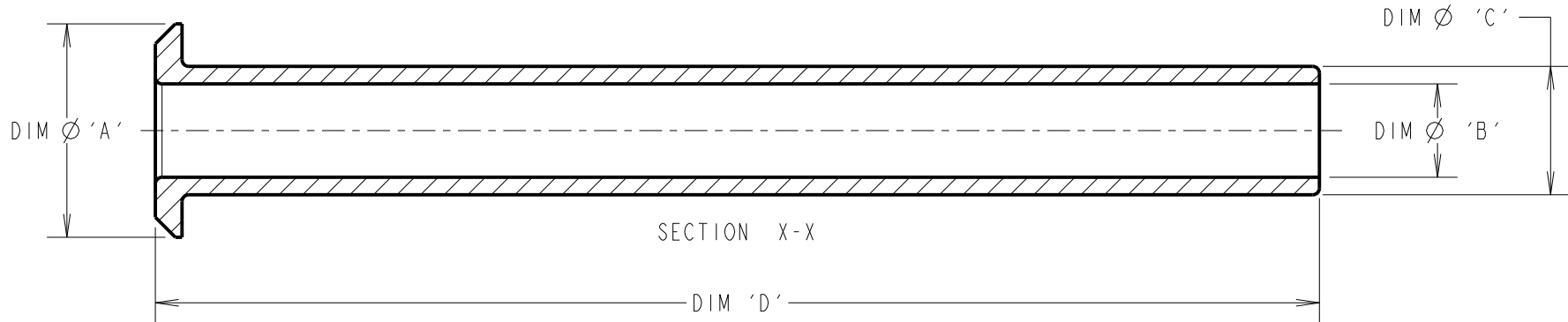
©

NOT TO SCALE

THIRD ANGLE PROJECTION

ALL DIMENSIONS IN mm

FOR INFORMATION ONLY  
Correct at time of issue



| PART No.   | DIM 'A' $\varnothing \pm 0.35$ | DIM 'B' $\varnothing \pm 0.40$ | DIM 'C' $\varnothing \pm 0.40$ | DIM 'D' $\pm 1.50$ |
|------------|--------------------------------|--------------------------------|--------------------------------|--------------------|
| C90-3420-4 | 12.80                          | 5.60                           | 7.70                           | 69.80              |
| C90-3420-5 | 12.70                          | 6.60                           | 8.00                           | 69.85              |
| C90-3420-6 | 15.60                          | 7.92                           | 10.85                          | 66.68              |

|                |      |          |       |
|----------------|------|----------|-------|
| MGP            | 2    | 29.06.22 | 31681 |
| NAME           | ISS. | DATE     | CN/CO |
| APPROVED: MGP  |      |          |       |
| CHECKED: MR    |      |          |       |
| DRAWN:         |      | R. ADDE  |       |
| CUSTOMER REF.: |      |          |       |
| ASSEMBLY DRG:  |      |          |       |

## HARWIN

www.harwin.com  
technical@harwin.com

THIS DRAWING AND ANY INFORMATION OR DESCRIPTIVE MATTER SET OUT HEREON ARE CONFIDENTIAL AND COPYRIGHT PROPERTY OF THE HARWIN GROUP AND MUST NOT BE DISCLOSED, LOANED, COPIED OR USED FOR MANUFACTURING, TENDERING OR FOR ANY OTHER PURPOSE WITHOUT THEIR WRITTEN PERMISSION.

TOLERANCES  
X. =  $\pm 1\text{mm}$   
X.X =  $\pm 0.50\text{mm}$   
X.XX =  $\pm 0.20\text{mm}$   
X.XXX =  $\pm 0.01\text{mm}$   
ANGLES =  $\pm 5^\circ$   
UNLESS STATED

MATERIAL:

RUBBER

FINISH:

S/AREA:

mm<sup>2</sup>

TITLE:

RUBBER BUSHING

DRAWING NUMBER:

**C90-3420-X**

SHT  
2 OF 2

# Customer Information Sheet

DRAWING No.: C90-3106FXXSX-XX

IF IN DOUBT - ASK

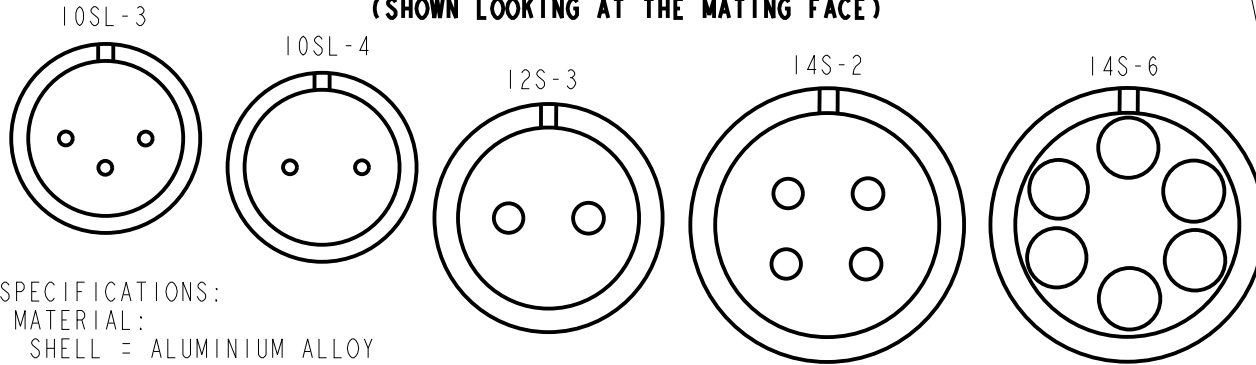
©

NOT TO SCALE

THIRD ANGLE PROJECTION

ALL DIMENSIONS IN mm

## CONTACT LAYOUT (SHOWN LOOKING AT THE MATING FACE)

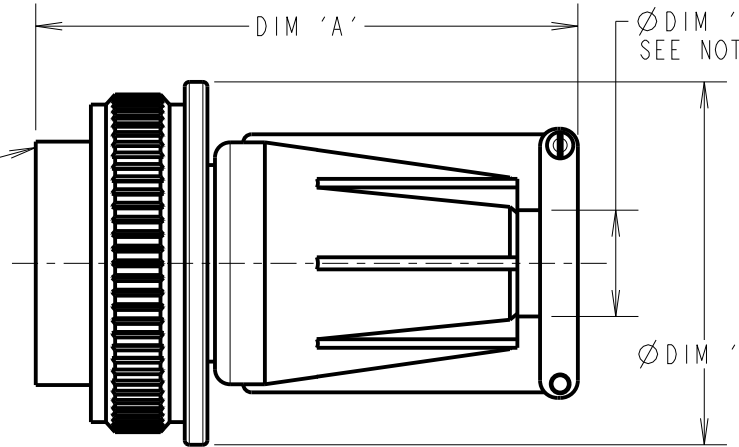


'C' THREAD

DIM 'A'

Ø DIM 'D'  
SEE NOTE 4

Ø DIM 'B'



### SPECIFICATIONS:

#### MATERIAL:

SHELL = ALUMINIUM ALLOY  
INSULATOR = SYNTHETIC RUBBER  
GROMMET = SYNTHETIC RUBBER  
CONTACT = COPPER ALLOY

#### FINISH:

SHELL = ZINC COBALT ALLOY, BLACK  
CONTACT = SILVER

#### ENVIRONMENTAL:

OPERATING TEMPERATURE = -55°C TO +125°C

#### MECHANICAL:

VIBRATION SENSITIVITY = 10Hz TO 500Hz, 98m/s<sup>2</sup> (10G)  
SHOCK SEVERITY = 490m/s<sup>2</sup> (50G) FOR 11ms  
WATER RESISTANCE (SEALING) = 1.8m FOR 48HRS,  
EXCEEDS IP67

#### ELECTRICAL:

CURRENT RATING = 13A  
VOLTAGE RATING:  
10SL, 12S SHELL SIZES = 500V AC, 700V DC  
14S SHELL SIZE = 200V AC, 250V DC  
VOLTAGE PROOF:  
10SL & 12S SHELL SIZES = 2,000V AC  
14S SHELL SIZES = 1,000V AC  
INSULATION RESISTANCE = 5,000MΩ MIN

FOR MECHANICAL/ELECTRICAL REQUIREMENTS,  
SEE COMPONENT SPECIFICATION CO45XX (LATEST ISSUE)

ORDER CODE:

**C90-3106FXXXX-XX**

SHELL SIZE (CONTACT LAYOUT):  
10SL-3, 10SL-4, 12S-3, 14S-2  
14S-6

CONTACT GENDER:

P - MALE  
S - FEMALE

### NOTES:

1. PRODUCT IS RoHS COMPLIANT.
2. PRODUCT IS PACKED IN BAGS.
3. RECOMMENDED WIRE SIZE 16-22 AWG.
4. CABLE CLEARANCE.
5. RECOMMENDED WIRE STRIP LENGTH = 7.5mm.
6. RUBBER BUSHING SUPPLIED WITH CONNECTOR  
- SEE TABLE FOR APPLICABLE PRODUCT

**FOR INFORMATION ONLY**  
Correct at time of issue

| SHELL SIZE | DIM 'A' MAX | Ø DIM 'B' | 'C' THREAD | Ø DIM 'D' MAX | RUBBER BUSHING |
|------------|-------------|-----------|------------|---------------|----------------|
| 10SL       | 58.72       | 22.04     | 5/8-24UNEF | 7.14          | C90-3240-4     |
| 12S        | 58.72       | 25.40     | 3/4-20UNEF | 7.14          | C90-3240-4     |
| 14S        | 58.72       | 28.30     | 7/8-20UNEF | 10.31         | C90-3240-6     |

|                |      |          |       |
|----------------|------|----------|-------|
| MGP            | 10   | 29.06.22 | 31681 |
| NAME           | ISS. | DATE     | CN/CO |
| APPROVED: MGP  |      |          |       |
| CHECKED: MR    |      |          |       |
| DRAWN:         |      | R. ADDE  |       |
| CUSTOMER REF.: |      |          |       |
| ASSEMBLY DRG:  |      |          |       |

# HARWIN

www.harwin.com  
technical@harwin.com

THIS DRAWING AND ANY INFORMATION OR DESCRIPTIVE MATTER SET OUT HEREON ARE CONFIDENTIAL AND COPYRIGHT PROPERTY OF THE HARWIN GROUP AND MUST NOT BE DISCLOSED, LOANED, COPIED OR USED FOR MANUFACTURING, TENDERING OR FOR ANY OTHER PURPOSE WITHOUT THEIR WRITTEN PERMISSION.

#### TOLERANCES

X. = ±1mm  
X.X = ±0.50mm  
X.XX = ±0.20mm  
X.XXX = ±0.01mm  
ANGLES = ±5°  
UNLESS STATED

#### MATERIAL:

SEE ABOVE

FINISH: SEE ABOVE

S/AREA:

mm<sup>2</sup>

#### TITLE:

STRAIGHT PLUG

DRAWING NUMBER:

**C90-3106FXXSX-XX**

SHT  
2 OF 2