

Change to Visual Appearance of XLamp® XT-E LEDs

PCN-CM044

Announcement Date: January 27, 2014

Implementation Date: February 10, 2014

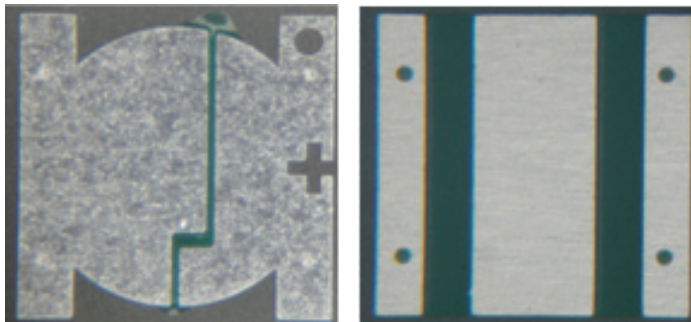
This notification applies to the following Cree order codes:
XTExxx-xx-xxxx-xxxxxxxxxx

No customer action is required.

CHANGE DESCRIPTION

Cree will begin shipment of the XLamp XT-E LEDs listed above with two dots on the bottom of the package instead of four. In addition, the location of the plus (+) sign on the top of the XT-E package is shifted. Examples of the XLamp XT-E LED with the new visual appearance are shown in the pictures below. To highlight the differences in the top view, the pictures show only the LED substrate because the visual difference can be challenging to see in finished LEDs. All of these new appearance XLamp XT-E LEDs meet the product specifications stated in the data sheet and use the same supporting documentation, such as LM-80 reports.

CURRENT APPEARANCE



TOP VIEW

BOTTOM VIEW

NEW APPEARANCE



TOP VIEW

BOTTOM VIEW

IMPACT OF CHANGE

Beginning February 10, 2014, Cree will begin shipments of the XLamp XT-E LEDs listed above with a new visual appearance. Each reel may contain LEDs with the current visual appearance, new visual appearance or a mixture of both old and new appearance. Customers may receive shipments containing both the current and new appearances in the same shipment until Cree's inventory of the old appearance LEDs is depleted.

No customer action is required.