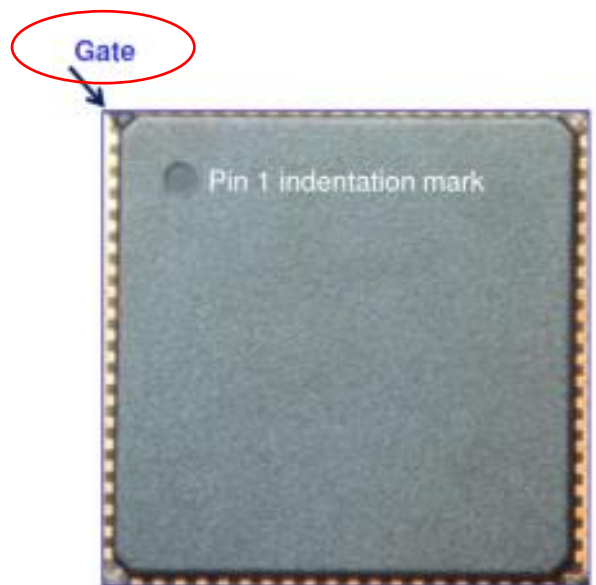
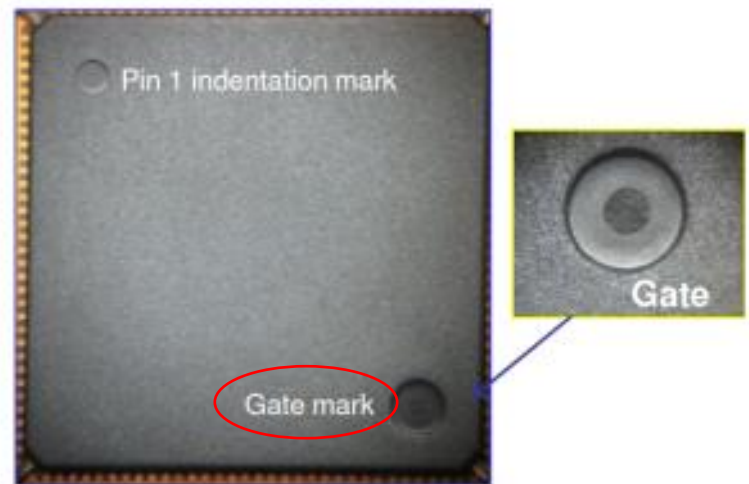


# 14x14 Mold Compound & Mold Gate Position Change

Change Item	AK1	AP1	Reason for Change
14BD Mold Compound	Sumitomo G700L	Sumitomo G631HQ	AP1 standard
14x14 Mold Gate Position	Package corner	Package top side, opposite corner of Pin 1 mark	AP1 standard



**AK1 Example**



**AP1 Example**

Assembly Transfer of Selected 14x14 LQFP, 14x14 LQFP\_EP and 7x7,10x10,12x12,14x14 TQFP\_EP Products to Amkor Philippines

### 10x10, 12x12 TQFP\_EP Using G700L/8361J at Amkor Philippines

QUALIFICATION PLAN / STATUS			
TEST	SPECIFICATION	SAMPLE SIZE	EXPECTED COMPLETION DATE
Temperature Cycle (TC)*	JEDEC <i>JESD22-A104</i>	3 x 45	March 2015
Autoclave (AC)*	JEDEC <i>JESD22-A102</i>	3 x 45	March 2015
Highly Accelerated Stress Test (HAST)*	JEDEC <i>JESD22-A110</i>	3 x 45	March 2015
Solder Heat Resistance (SHR)*	JEDEC/IPC <i>J-STD-020</i>	3 x 11	March 2015
High Temperature Storage Life (HTSL)	JEDEC <i>JESD22-A103</i>	1 x 45	March 2015

\*Preconditioned per JEDEC/IPC J-STD-020

Assembly Transfer of Selected 14x14 LQFP, 14x14 LQFP\_EP and 7x7,10x10,12x12,14x14 TQFP\_EP Products to Amkor Philippines

### 14x14 LQFP Using G631HQ/3230 at Amkor Philippines

QUALIFICATION PLAN / STATUS			
TEST	SPECIFICATION	SAMPLE SIZE	EXPECTED COMPLETION DATE
Temperature Cycle (TC)*	JEDEC <i>JESD22-A104</i>	3 x 45	March 2015
Autoclave (AC)*	JEDEC <i>JESD22-A102</i>	3 x 45	March 2015
Highly Accelerated Stress Test (HAST)*	JEDEC <i>JESD22-A110</i>	3 x 45	March 2015
Solder Heat Resistance (SHR)*	JEDEC/IPC <i>J-STD-020</i>	3 x 11	March 2015
High Temperature Storage Life (HTSL)	JEDEC <i>JESD22-A103</i>	1 x 45	March 2015

\*Preconditioned per JEDEC/IPC J-STD-020

Assembly Transfer of Selected 14x14 LQFP, 14x14 LQFP\_EP and 7x7,10x10,12x12,14x14 TQFP\_EP Products to Amkor Philippines

**14x14 LQFP Using G631HQ/3230/QMI536 at Amkor Philippines**

QUALIFICATION PLAN / STATUS			
TEST	SPECIFICATION	SAMPLE SIZE	EXPECTED COMPLETION DATE
Temperature Cycle (TC)*	JEDEC <i>JESD22-A104</i>	3 x 45	March 2015
Autoclave (AC)*	JEDEC <i>JESD22-A102</i>	3 x 45	March 2015
Highly Accelerated Stress Test (HAST)*	JEDEC <i>JESD22-A110</i>	3 x 45	March 2015
Solder Heat Resistance (SHR)*	JEDEC/IPC <i>J-STD-020</i>	3 x 11	March 2015
High Temperature Storage Life (HTSL)	JEDEC <i>JESD22-A103</i>	1 x 45	March 2015

\*Preconditioned per JEDEC/IPC J-STD-020

Assembly Transfer of Selected 14x14 LQFP, 14x14 LQFP\_EP and 7x7,10x10,12x12,14x14 TQFP\_EP Products to Amkor Philippines

**14x14 LQFP\_EP Using G631HQ/3230 at Amkor Philippines**

QUALIFICATION PLAN / STATUS			
TEST	SPECIFICATION	SAMPLE SIZE	EXPECTED COMPLETION DATE
Temperature Cycle (TC)*	JEDEC <i>JESD22-A104</i>	3 x 45	March 2015
Autoclave (AC)*	JEDEC <i>JESD22-A102</i>	3 x 45	March 2015
Highly Accelerated Stress Test (HAST)*	JEDEC <i>JESD22-A110</i>	3 x 45	March 2015
Solder Heat Resistance (SHR)*	JEDEC/IPC <i>J-STD-020</i>	3 x 11	March 2015
High Temperature Storage Life (HTSL)	JEDEC <i>JESD22-A103</i>	1 x 45	March 2015

\*Preconditioned per JEDEC/IPC J-STD-020

Assembly Transfer of Selected 14x14 LQFP, 14x14 LQFP\_EP and 7x7,10x10,12x12,14x14 TQFP\_EP Products to Amkor Philippines

**14x14 TQFP\_EP Using G631HQ/3230 at Amkor Philippines**

QUALIFICATION PLAN / STATUS			
TEST	SPECIFICATION	SAMPLE SIZE	EXPECTED COMPLETION DATE
Temperature Cycle (TC)*	JEDEC <i>JESD22-A104</i>	3 x 45	March 2015
Autoclave (AC)*	JEDEC <i>JESD22-A102</i>	3 x 45	March 2015
Highly Accelerated Stress Test (HAST)*	JEDEC <i>JESD22-A110</i>	3 x 45	March 2015
Solder Heat Resistance (SHR)*	JEDEC/IPC <i>J-STD-020</i>	3 x 11	March 2015
High Temperature Storage Life (HTSL)	JEDEC <i>JESD22-A103</i>	1 x 45	March 2015

\*Preconditioned per JEDEC/IPC J-STD-020

Assembly Transfer of Selected 14x14 LQFP, 14x14 LQFP\_EP and 7x7,10x10,12x12,14x14 TQFP\_EP Products to Amkor Philippines

**7x7, 10x10, 12x12 TQFP\_EP Using G700L/3230 at Amkor Philippines**

QUALIFICATION PLAN / STATUS			
TEST	SPECIFICATION	SAMPLE SIZE	EXPECTED COMPLETION DATE
Temperature Cycle (TC)*	JEDEC <i>JESD22-A104</i>	3 x 45	March 2015
Autoclave (AC)*	JEDEC <i>JESD22-A102</i>	3 x 45	March 2015
Highly Accelerated Stress Test (HAST)*	JEDEC <i>JESD22-A110</i>	3 x 45	March 2015
Solder Heat Resistance (SHR)*	JEDEC/IPC <i>J-STD-020</i>	3 x 11	March 2015
High Temperature Storage Life (HTSL)	JEDEC <i>JESD22-A103</i>	1 x 45	March 2015

\*Preconditioned per JEDEC/IPC J-STD-020



FG Model	PkgType	BodySize	PkgLeadCount	WIRE DIA. (BEFORE)	WIRE DIA. (AFTER)	EPOXY (BEFORE)	EPOXY (AFTER)	MOLD (BEFORE)	MOLD (AFTER)	MOLD GATE POSITION (BEFORE)	MOLD GATE POSITION (AFTER)
AD9389BBSTZ-165	LQFP	14X14X1.4	80	1	1	Top die: QM-536Bottom die: 3230	Top die: QM-536Bottom die: 3230	G700L	G631HQ	Pkg corner	Package top side, opposite corner of Pin 1 mark
AD9389BBSTZ-80	LQFP	14X14X1.4	80	1	1	Top die: QM-536Bottom die: 3230	Top die: QM-536Bottom die: 3230	G700L	G631HQ	Pkg corner	Package top side, opposite corner of Pin 1 mark
AD8116JSTZ	LQFP	14X14X1.4	128	1.2	1.2	3230	3230	G700L	G631HQ	Pkg corner	Package top side, opposite corner of Pin 1 mark
AD53509JSWZ	LQFP_EP	14X14X1.4	52	1	1	3230	3230	G700L	G631HQ	Pkg corner	Package top side, opposite corner of Pin 1 mark
AD53063-03Z	LQFP_EP	14X14X1.4	80	1	1	3230	3230	G700L	G631HQ	Pkg corner	Package top side, opposite corner of Pin 1 mark
AD53564JSWZ	LQFP_EP	14X14X1.4	100	1	1	3230	3230	G700L	G631HQ	Pkg corner	Package top side, opposite corner of Pin 1 mark
AD9951YSVZ	TQFP_EP	7X7X1.0	48	1	1	3230	3230	G700L	G700L	Pkg corner	Pkg corner
AD9951YSVZ-REEL7	TQFP_EP	7X7X1.0	48	1	1	3230	3230	G700L	G700L	Pkg corner	Pkg corner
AD9952YSVZ	TQFP_EP	7X7X1.0	48	1	1	3230	3230	G700L	G700L	Pkg corner	Pkg corner
AD9952YSVZ-REEL7	TQFP_EP	7X7X1.0	48	1	1	3230	3230	G700L	G700L	Pkg corner	Pkg corner
AD9954YSVZ	TQFP_EP	7X7X1.0	48	1	1	3230	3230	G700L	G700L	Pkg corner	Pkg corner
AD9954YSVZ-REEL7	TQFP_EP	7X7X1.0	48	1	1	3230	3230	G700L	G700L	Pkg corner	Pkg corner
AD6645ASVZ-105	TQFP_EP	10X10X1.0	52	1.2	1.2	3230	3230	G700L	G700L	Pkg corner	Pkg corner
AD9433BSVZ-125	TQFP_EP	10X10X1.0	52	1.2	1.2	3230	3230	G700L	G700L	Pkg corner	Pkg corner
AD11/2059Z-2	TQFP_EP	10X10X1.0	64	1	1	8361J	8361J	G700L	G700L	Pkg corner	Pkg corner
AD5560JSVUZ	TQFP_EP	10X10X1.0	64	1	1	8361J	8361J	G700L	G700L	Pkg corner	Pkg corner
AD5560JSVUZ-REEL	TQFP_EP	10X10X1.0	64	1	1	8361J	8361J	G700L	G700L	Pkg corner	Pkg corner
AD7760BSVZ	TQFP_EP	10X10X1.0	64	1	1	3230	3230	G700L	G700L	Pkg corner	Pkg corner
AD7760BSVZ-REEL	TQFP_EP	10X10X1.0	64	1	1	3230	3230	G700L	G700L	Pkg corner	Pkg corner
AD5522JSVDZ	TQFP_EP	12X12X1.0	80	1	1	3230	3230	G700L	G700L	Pkg corner	Pkg corner
AD5522JSVUZ	TQFP_EP	12X12X1.0	80	1	1	3230	3230	G700L	G700L	Pkg corner	Pkg corner
AD5522JSVUZ-RL	TQFP_EP	12X12X1.0	80	1	1	3230	3230	G700L	G700L	Pkg corner	Pkg corner
AD8387JSVZ	TQFP_EP	12X12X1.0	80	1	1	3230	3230	G700L	G700L	Pkg corner	Pkg corner
AD9726BSVZ	TQFP_EP	12X12X1.0	80	1	1	8361J	8361J	G700L	G700L	Pkg corner	Pkg corner
AD9726BSVZRL	TQFP_EP	12X12X1.0	80	1	1	8361J	8361J	G700L	G700L	Pkg corner	Pkg corner
AD9775BSVZ	TQFP_EP	12X12X1.0	80	1	1	3230	3230	G700L	G700L	Pkg corner	Pkg corner
AD9775BSVZRL	TQFP_EP	12X12X1.0	80	1	1	3230	3230	G700L	G700L	Pkg corner	Pkg corner
AD9777BSVZ	TQFP_EP	12X12X1.0	80	1	1	3230	3230	G700L	G700L	Pkg corner	Pkg corner
AD9777BSVZRL	TQFP_EP	12X12X1.0	80	1	1	3230	3230	G700L	G700L	Pkg corner	Pkg corner
AD9786BSVZ	TQFP_EP	12X12X1.0	80	1	1	8361J	8361J	G700L	G700L	Pkg corner	Pkg corner
AD9786BSVZRL	TQFP_EP	12X12X1.0	80	1	1	8361J	8361J	G700L	G700L	Pkg corner	Pkg corner
AD9410BSVZ	TQFP_EP	14X14X1.0	80	1.2	1.2	3230	3230	G700L	G631HQ	Pkg corner	Package top side, opposite corner of Pin 1 mark
AD9852ASVZ	TQFP_EP	14X14X1.0	80	1.2	1.2	3230	3230	G700L	G631HQ	Pkg corner	Package top side, opposite corner of Pin 1 mark
AD9854ASVZ	TQFP_EP	14X14X1.0	80	1.2	1.2	3230	3230	G700L	G631HQ	Pkg corner	Package top side, opposite corner of Pin 1 mark
AD80107Z	TQFP_EP	14X14X1.0	100	1	1	3230	3230	G700L	G631HQ	Pkg corner	Package top side, opposite corner of Pin 1 mark
AD80142BSVZ-200	TQFP_EP	14X14X1.0	100	1	1	3230	3230	G700L	G631HQ	Pkg corner	Package top side, opposite corner of Pin 1 mark
AD80205BSVZ-200	TQFP_EP	14X14X1.0	100	1	1	3230	3230	G700L	G631HQ	Pkg corner	Package top side, opposite corner of Pin 1 mark
AD80215BSVZ-185	TQFP_EP	14X14X1.0	100	1	1	3230	3230	G700L	G631HQ	Pkg corner	Package top side, opposite corner of Pin 1 mark
AD9271BSVZ-25	TQFP_EP	14X14X1.0	100	1	1	3230	3230	G700L	G631HQ	Pkg corner	Package top side, opposite corner of Pin 1 mark
AD9271BSVZ-40	TQFP_EP	14X14X1.0	100	1	1	3230	3230	G700L	G631HQ	Pkg corner	Package top side, opposite corner of Pin 1 mark
AD9271BSVZ-50	TQFP_EP	14X14X1.0	100	1	1	3230	3230	G700L	G631HQ	Pkg corner	Package top side, opposite corner of Pin 1 mark
AD9271BSVZRL-40	TQFP_EP	14X14X1.0	100	1	1	3230	3230	G700L	G631HQ	Pkg corner	Package top side, opposite corner of Pin 1 mark
AD9272BSVZ-40	TQFP_EP	14X14X1.0	100	1	1	3230	3230	G700L	G631HQ	Pkg corner	Package top side, opposite corner of Pin 1 mark
AD9272BSVZ-65	TQFP_EP	14X14X1.0	100	1	1	3230	3230	G700L	G631HQ	Pkg corner	Package top side, opposite corner of Pin 1 mark
AD9272BSVZ-80	TQFP_EP	14X14X1.0	100	1	1	3230	3230	G700L	G631HQ	Pkg corner	Package top side, opposite corner of Pin 1 mark





FG Model	PkgType	BodySize	PkgLeadCount	WIRE DIA. (BEFORE)	WIRE DIA. (AFTER)	EPOXY (BEFORE)	EPOXY (AFTER)	MOLD (BEFORE)	MOLD (AFTER)	MOLD GATE POSITION (BEFORE)	MOLD GATE POSITION (AFTER)
AD9272BSVZRL-40	TQFP_EP	14X14X1.0	100	1	1	3230	3230	G700L	G631HQ	Pkg corner	Package top side, opposite corner of Pin 1 mark
AD9272BSVZRL-65	TQFP_EP	14X14X1.0	100	1	1	3230	3230	G700L	G631HQ	Pkg corner	Package top side, opposite corner of Pin 1 mark
AD9272BSVZRL-80	TQFP_EP	14X14X1.0	100	1	1	3230	3230	G700L	G631HQ	Pkg corner	Package top side, opposite corner of Pin 1 mark
AD9273BSVZ-25	TQFP_EP	14X14X1.0	100	1	1	3230	3230	G700L	G631HQ	Pkg corner	Package top side, opposite corner of Pin 1 mark
AD9273BSVZ-40	TQFP_EP	14X14X1.0	100	1	1	3230	3230	G700L	G631HQ	Pkg corner	Package top side, opposite corner of Pin 1 mark
AD9273BSVZ-50	TQFP_EP	14X14X1.0	100	1	1	3230	3230	G700L	G631HQ	Pkg corner	Package top side, opposite corner of Pin 1 mark
AD9273BSVZRL-25	TQFP_EP	14X14X1.0	100	1	1	3230	3230	G700L	G631HQ	Pkg corner	Package top side, opposite corner of Pin 1 mark
AD9273BSVZRL-40	TQFP_EP	14X14X1.0	100	1	1	3230	3230	G700L	G631HQ	Pkg corner	Package top side, opposite corner of Pin 1 mark
AD9273BSVZRL-50	TQFP_EP	14X14X1.0	100	1	1	3230	3230	G700L	G631HQ	Pkg corner	Package top side, opposite corner of Pin 1 mark
AD9276BSVZ	TQFP_EP	14X14X1.0	100	1	1	3230	3230	G700L	G631HQ	Pkg corner	Package top side, opposite corner of Pin 1 mark
AD9277BSVZ	TQFP_EP	14X14X1.0	100	1	1	3230	3230	G700L	G631HQ	Pkg corner	Package top side, opposite corner of Pin 1 mark
AD9430BSVZ-170	TQFP_EP	14X14X1.0	100	1	1	3230	3230	G700L	G631HQ	Pkg corner	Package top side, opposite corner of Pin 1 mark
AD9430BSVZ-210	TQFP_EP	14X14X1.0	100	1	1	3230	3230	G700L	G631HQ	Pkg corner	Package top side, opposite corner of Pin 1 mark
AD9444BSVZ-80	TQFP_EP	14X14X1.0	100	1	1	3230	3230	G700L	G631HQ	Pkg corner	Package top side, opposite corner of Pin 1 mark
AD9445BSVZ-105	TQFP_EP	14X14X1.0	100	1	1	3230	3230	G700L	G631HQ	Pkg corner	Package top side, opposite corner of Pin 1 mark
AD9445BSVZ-125	TQFP_EP	14X14X1.0	100	1	1	3230	3230	G700L	G631HQ	Pkg corner	Package top side, opposite corner of Pin 1 mark
AD9446BSVZ-100	TQFP_EP	14X14X1.0	100	1	1	3230	3230	G700L	G631HQ	Pkg corner	Package top side, opposite corner of Pin 1 mark
AD9446BSVZ-80	TQFP_EP	14X14X1.0	100	1	1	3230	3230	G700L	G631HQ	Pkg corner	Package top side, opposite corner of Pin 1 mark
AD9460BSVZ-105	TQFP_EP	14X14X1.0	100	1	1	3230	3230	G700L	G631HQ	Pkg corner	Package top side, opposite corner of Pin 1 mark
AD9460BSVZ-80	TQFP_EP	14X14X1.0	100	1	1	3230	3230	G700L	G631HQ	Pkg corner	Package top side, opposite corner of Pin 1 mark
AD9461BSVZ	TQFP_EP	14X14X1.0	100	1	1	3230	3230	G700L	G631HQ	Pkg corner	Package top side, opposite corner of Pin 1 mark



FG Model	PkgType	BodySize	PkgLeadCount	WIRE DIA. (BEFORE)	WIRE DIA. (AFTER)	EPOXY (BEFORE)	EPOXY (AFTER)	MOLD (BEFORE)	MOLD (AFTER)	MOLD GATE POSITION (BEFORE)	MOLD GATE POSITION (AFTER)
AD9858BSVZ	TQFP_EP	14X14X1.0	100	1	1	3230	3230	G700L	G631HQ	Pkg corner	Package top side, opposite corner of Pin 1 mark
AD9910BSVZ	TQFP_EP	14X14X1.0	100	1	1	3230	3230	G700L	G631HQ	Pkg corner	Package top side, opposite corner of Pin 1 mark
AD9910BSVZ-REEL	TQFP_EP	14X14X1.0	100	1	1	3230	3230	G700L	G631HQ	Pkg corner	Package top side, opposite corner of Pin 1 mark
AD9957BSVZ	TQFP_EP	14X14X1.0	100	1	1	3230	3230	G700L	G631HQ	Pkg corner	Package top side, opposite corner of Pin 1 mark
AD9957BSVZ-REEL	TQFP_EP	14X14X1.0	100	1	1	3230	3230	G700L	G631HQ	Pkg corner	Package top side, opposite corner of Pin 1 mark
ADATE302-02BSVZ	TQFP_EP	14X14X1.0	100	1	1	3230	3230	G700L	G631HQ	Pkg corner	Package top side, opposite corner of Pin 1 mark
ADATE305BSVZ	TQFP_EP	14X14X1.0	100	1	1	3230	3230	G700L	G631HQ	Pkg corner	Package top side, opposite corner of Pin 1 mark
ADAU1442YSVZ-3A-RL	TQFP_EP	14X14X1.0	100	1	1	3230	3230	G700L	G631HQ	Pkg corner	Package top side, opposite corner of Pin 1 mark
ADAU1445YSVZ-3A	TQFP_EP	14X14X1.0	100	1	1	3230	3230	G700L	G631HQ	Pkg corner	Package top side, opposite corner of Pin 1 mark
ADAU1445YSVZ-3A-RL	TQFP_EP	14X14X1.0	100	1	1	3230	3230	G700L	G631HQ	Pkg corner	Package top side, opposite corner of Pin 1 mark
ADN4604ASVZ	TQFP_EP	14X14X1.0	100	1	1	3230	3230	G700L	G631HQ	Pkg corner	Package top side, opposite corner of Pin 1 mark
ADN4604ASVZ-RL	TQFP_EP	14X14X1.0	100	1	1	3230	3230	G700L	G631HQ	Pkg corner	Package top side, opposite corner of Pin 1 mark