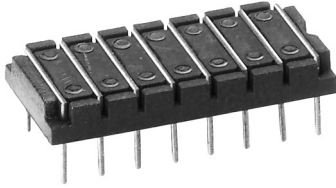


Programming Jumper Plug Assemblies**8136-875 Series**

8136-475G8

FEATURES:

8136-475 Series of programmed jumper plugs offer the unique combination of low cost and flexible signal path selection. Standard configurations are supplied programmed across rows. Special configurations are available side by side and across row, intermixed programmed signal path variations.

- Low profile; only .100" (2,54) high, "X" & "Y" stackability
- Available with gold or tin plating
- Available in standard units of 1,2,3,4,7,8,9 (double pin)
- Jumper pin assembly spans .300" (7,62) centres to connect opposing contacts in I.C. patterns, or .100" (2,54) centres to connect adjacent pins
- Also available in special configurations combining .100" (2,54) centre shorting pins with .300" (7,62) centre pins
- To allow greater flexibility, individual jumper pins and insulators are available for installation by the customer (simple press assembly)

MATERIAL SPECIFICATIONS:

Insulator.....Thermoplastic polyester, UL rated 94V-0
 Pin.....Phosphor bronze
 Plating.....Gold or tin

PERFORMANCE SPECIFICATIONS:**MECHANICAL**

Solderability.....MIL-STD-202, Method 208

ELECTRICAL

Current Rating.....3 Amps DC
 Operating Voltage.....500 Volts RMS at atmospheric pressure
 Dielectric Withstanding
 Voltage.....2,500 Volts RMS for 5 seconds
 Bulk Resistance.....10 Milliohms at .020 Amps DC
 Insulation Resistance..... 2×10^9 Ohms at 90% relative humidity

ENVIRONMENTAL

Operating Temperature.....-65°C to +125°C



Programming Jumper Plug Assemblies

8136-475 Series

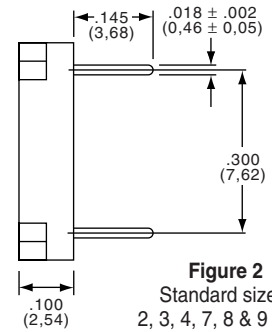
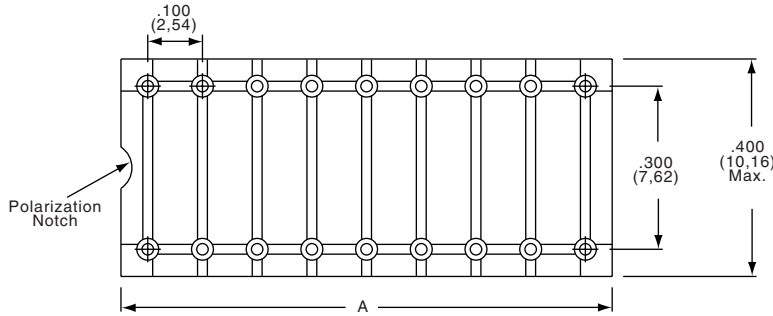


Figure 2
Standard sizes:
2, 3, 4, 7, 8 & 9 units

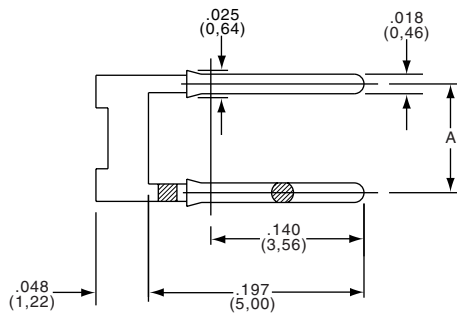


Figure 3
Jumper pin

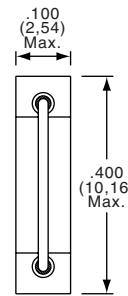


Figure 1
Single unit

INSULATOR ONLY

Size	Part Number	Dimension A
Insulator-1 Unit	8136-477P1	.100 (2,54)
Insulator-2 Units	8136-652P6	.200 (5,08)
Insulator-3 Units	8136-652P1	.300 (7,62)
Insulator-4 Units	8136-652P2	.400 (10,16)
Insulator-7 Units	8136-652P3	.700 (17,78)
Insulator-8 Units	8136-652P4	.800 (20,32)
Insulator-9 Units	8136-652P5	.900 (22,86)

PART NUMBER / STANDARD CONFIGURATIONS

Gold Part Number	Figure	Number of Units	Dim. A
8136-475G1	1	1	----
8136-475G2	2	2	.200 (5,08)
8136-475G3	2	3	.300 (7,62)
8136-475G4	2	4	.400 (10,16)
8136-475G7	2	7	.700 (17,78)
8136-475G8	2	8	.800 (20,32)
8136-475G9	2	9	.900 (22,86)
8136-651P2 (gold)	3	Jumper Pin	.100 (2,54)
8136-651P3 (tin)	3	Jumper Pin	.100 (2,54)
8136-650P2 (gold)	3	Jumper Pin	.300 (7,62)
8136-650P3 (tin)	3	Jumper Pin	.300 (7,62)

* For tin-plated version of Figs. 1&2, use suffix "T" after part number.
Example: 8136-475G1T.