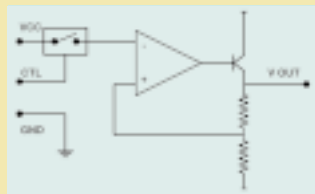


## Low Drop Out Regulators



### Features

- Very low drop out voltage, 300mV(typ).
- Complete with power saving function allowing 0µA standby.
- Built-in thermal and short circuit protection.
- Output voltage precision ±2%.
- Wide input voltage range.



## IrDA Infrared Communication Module

### Features

- IrDA 1.2 compatible.
- SIR data rate of 2.4~115Kbps.
- Built-in infrared and photo pin diode.
- Built-in wave shaping circuitry.
- Power down function with a standby current of 0.01µA(typ)
- Standby to RX of only 75µA.
- Low supply voltage Vcc = 2.6~3.3 volts.
- Compact surface mount package can be mounted in one of two planes.
- Metallic casing ensures high resistance to EMI noise.

	Supply Voltage (V)	Power Dissipation (mW)	Tx Distance (cm)
RPM870-H7	2.6~3.6 (VLEDA-5.5)	100	20~30; fixed by internal current source
RPM871-H7	2.6~3.6 (VLEDA-5.5)	150	40~60; adjustable with external resistor



### Variable - Positive

	Output Voltage (V)	Input Voltage (V)	Max Io (A)
**BA00BCOWFP	1.5~15.0	3.0~16.0	1.0

### Variable - Output Negative Regulator - with On Board Charge Pump

	Output Voltage (V)	Input Voltage (V)	Max Io (A)
*BD6111FV	VOUT = -1.6 Vin	2.5~5.5	20.0

### Fixed

	Output Voltage (V)	Input Voltage (V)	Max Io (A)
**BA18BCOWFP	1.8	3.0~16.0	1.0
**BA25BCOWFP	2.5	3.0~16.0	1.0
**BAXXSFP	5.0~12.0	25.0 max	1.0

### Dual Channel

	Output Voltage (V)	Input Voltage (V)	Max Io (A)
BA33C18FP	3.3/1.8	4.0~16.0	1.0
BA33C25FP	3.3/2.5	4.0~16.0	1.0

### Minature SOT25

	Output Voltage (V)	Input Voltage (V)	Max Io (A)
BAXXLBSG	2.8, 2.9, 3.0, 3.2, 3.3, 3.6, 3.8, 4.0 & 5.0	16.0 max	0.15

\*Supplied in SSOP-B8 package. \*\*Note: also available without power saving function.

## EE PROM Memory - New "Double-Cell" Technology

### Features

- Double cell technology removes bit failure.
- Low supply voltage Vcc 1.8~5.5 volts.
- Data retention up to 40 years.
- Up to 1 million write cycles.
- Vcc lock-out function.
- Auto increment.
- Hardware write protection.
- Built-in noise cancelling Schmitt triggering circuitry.
- Industrial operating temperature range, (-40°C~+85°C) as standard
- SOP8, SOP8-J8 (JEDEC) and SSOP-B8.

Series	Interface	Density
BR24C	I <sup>2</sup> c BUS	1K to 64K
BR93L	Serial 3 Wire	1K to 4K

### EE PROM Application Product

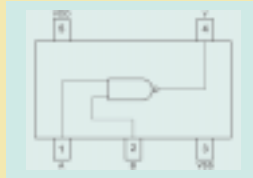
P/N	Supply Voltage (V)	Function	Package
BU9831F	2.7~5.5	2K Bit EE PROM Potentiometer	SOP8
BU9877AFV	2.7~5.5	Memory Module, DIMM & RIMM	SSOP-B8
BR24C21F/FV	2.5~5.5	PC Monitor Identification (supports VESA DDC1/DDC2B)	SOP8/SSOP-B8



## Single Gate Logic - BU4S Series

### Features

- Fully compatible with CMOS 4000 series.
- Low consumption current, I<sub>q</sub> = 0.5µA (typ).
- Wide supply voltage, V<sub>cc</sub> 3.0~16.0 volts.
- Small compact SOT25 package reduces PCB space requirements.
- Single gate assist CAD design.
- Propagation delay 45ns (typ).



	Function	Compatible With
BU4S01	Single 2-input "NOR" gate	TC4S01F
BU4S11	Single 2-input NAND gate	TC4S11F
BU4SU69	Single unbuffered inverter	TC4SU69F
BU4S71	Single 2-input "OR" gate	TC4S71F
BU4S81	Single 2-input "AND" gate	TC4S81F
BU4S584	Single Schmitt trigger	TC4S584F
BU4S66	Single analogue switch	TC4S66F

## LCD Segment Drivers

### Features

- Wide supply voltage (v), 2.5 to 5.5 volts.
- Built-in display data ram (DDRAM).
- Serial interface.
- On chip oscillator circuitry.
- Built-in LCD drive voltage, 1/2 and 1/3 bias.
- Operating temperature range from -40°C to +85°C.
- Recommended for OA, security panels and instrumentation.



Device	Supply Voltage (v)	Function	Configuration	Duty	Bias	Package
BU9716BK/BKV	4.5~5.5	96 output segment driver	32 seg x 3 com	1/3	1/2, 1/3	QFP44/VQFP48
BU9718KV	2.7~3.5	96 output segment driver	32 seg x 3 com	1/3	1/2, 1/3	VQFP48
BU9728AKV	2.5~5.5	128 output segment driver	32 seg x 4 com	1/4	1/3	VQFP48
BU9729K	2.5~5.5	72 output segment driver	18 seg x 4 com	1/4	1/3	QFP32
BU9735K	2.5~5.5	72 output segment driver	18 seg x 4 com	1/4	1/3	QFP32

## Vacuum Fluorescent Display (VFD) Driver - BA6621FP-Y

### Features

- Completely removes the requirement for an external transformer.
- On board oscillation and boost circuitry.
- Very low standby current, I<sub>cc</sub> = 100µA max.
- Binary controlled variable output duty cycle, 0% to 50% in 64 stages.
- Built-in thermal shut down.
- Wide supply voltage, 4.5~28 volts.
- Industry operating temp range, -40°C to +85°C.



Part Number	Max Supply Voltage (v)	Operating Consumption Current (mA)	Charge pump Output Voltage (v)	Power Dissipation (mW)
BA6621FP-Y	30	9.0	16.5	1450

## DC Motor Drivers - General Purpose

### Features

- Reversible H Drive.
- General purpose applications up to 2.2 amps maximum load.
- Maximum power dissipation up to 2.5 watts.
- Output mode - FRSB.
- Single and double channel.
- Wide supply voltage, 3.5~34 volts.
- Power save mode.
- Electronic governor and hall bias circuitry.
- Built in thermal shut down.
- Various package styles.



Fan Motor Drivers	Device	Description	Supply Voltage (v)	Features	Package
	BA6428F	Single phase full-wave driver	3.0~14.0	Lock detect, automatic restart thermal shutdown, alarm output pin.	SOP8
	BA6814AF	Dual phase half-wave driver	4.2~15.0	Lock detect, automatic restart, thermal shut down, hall signal output pin.	SOP8