

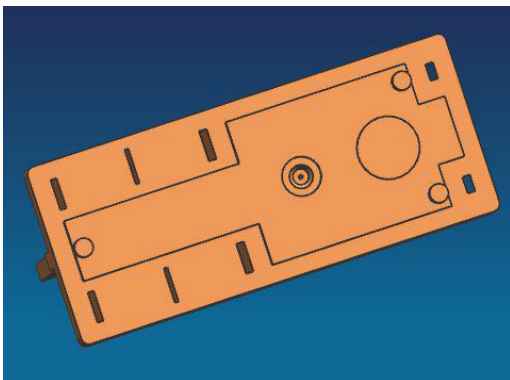
Dear Customer,

We have been informed by the manufacturer OKO there will be a change to the base of the K5A type relays listed below.

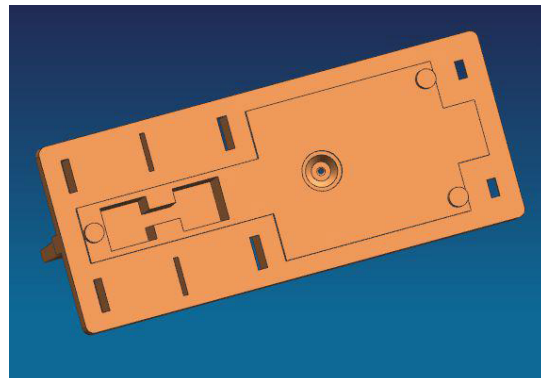
K5A05 K5A06 K5A12 K5A18 K5A24 K5A48

The relays have an internal 'T' structure which can cause an uneven base surface after the plastic injection process due to different plastic thicknesses. The new mould incorporates a groove which eliminates this and leaves the base even.

Before



After



The feature has been added for improvement and the form, fit, function and safety approvals of the Relays will not be affected by this change. This change will take immediate effect on deliveries from OKO to Anglia. Anglia operates a strict FIFO system in our warehouse facility therefore it may take some time for this change to filter through to customer deliveries of the above part numbers.

Please ensure this information is circulated to the relevant persons within your organisation to prevent any issues in the supply chain of the above products.

Yours Sincerely,

Anglia