

Cree® LED Product Label Change Notification

Customer Name: All customers

PCN Reference Number: PCN-LED-0451

Date Issued: 10/17/2017

Please be advised that Cree has qualified a Minor Change to all High-Brightness LEDs and that we will begin shipping the affected product with the change immediately after the PCN Issue Date.

Please review the additional PCN information below.

Affected Product

All High-Brightness LED product series.

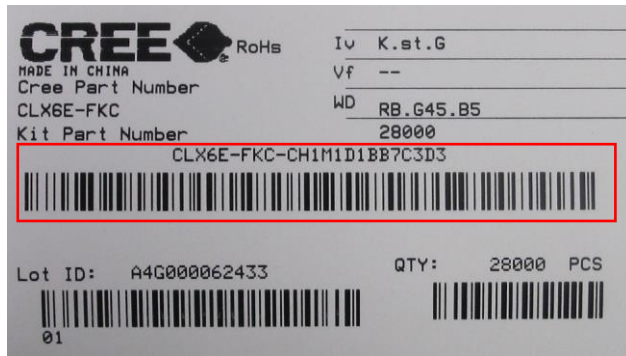
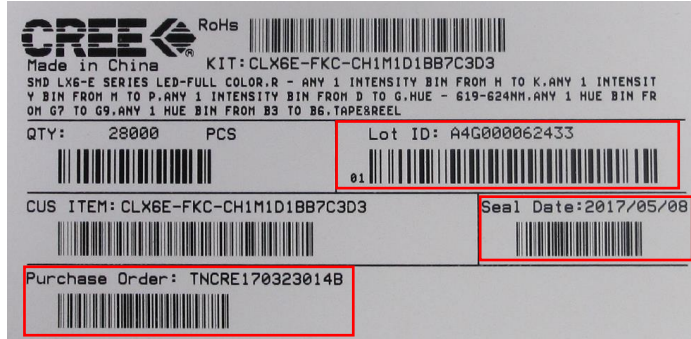
Description of the Change

The label formats have changed, but the label content has not changed. Please refer to the latest labels on boxes.

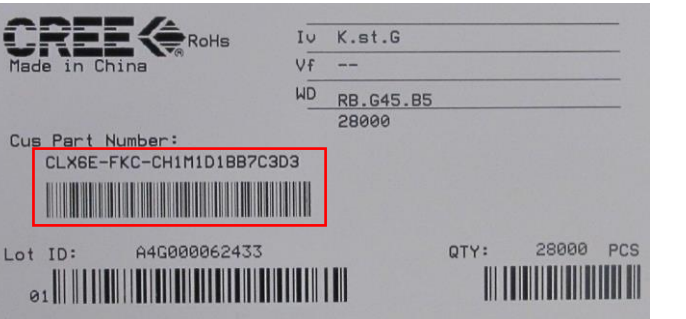
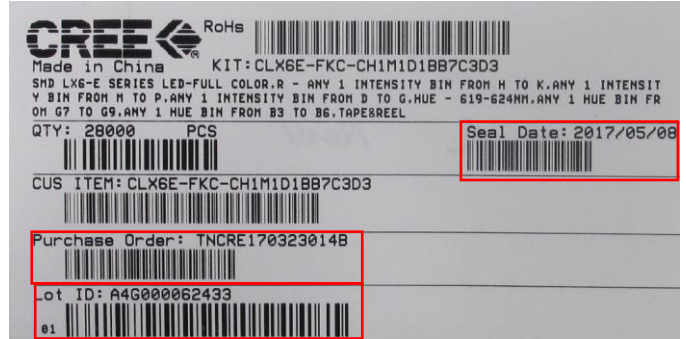
The label formats are revised as follows:

Group 1: SMD LED examples:

Current:

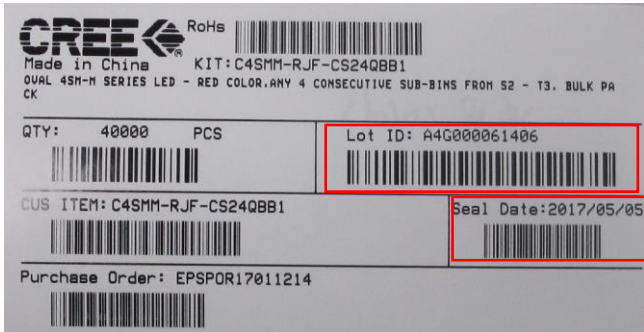


New:

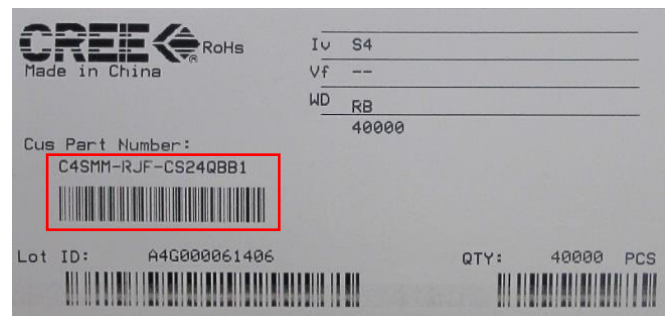
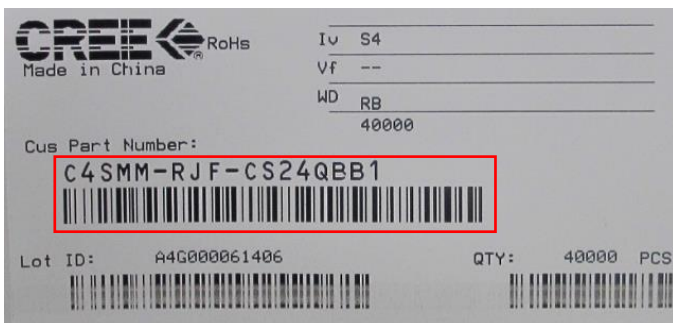
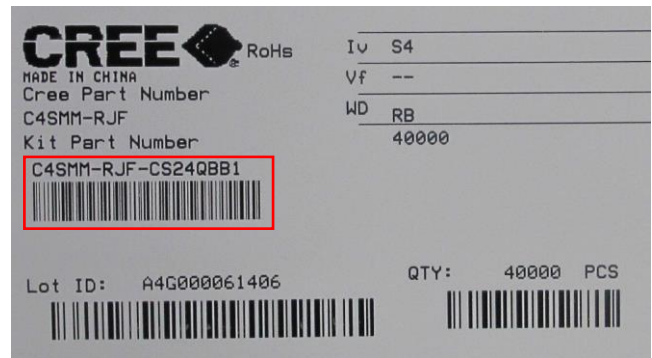
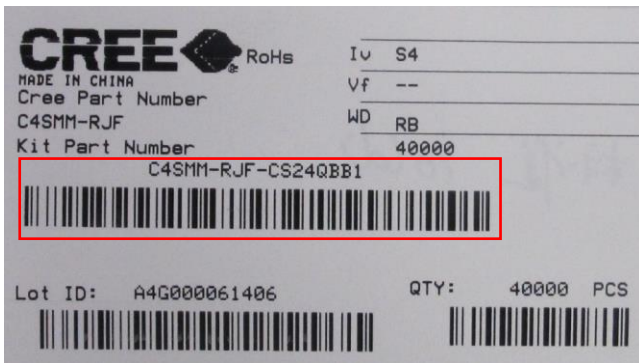


Group 2: P2, P4 LED examples

Current:



New:



Reason for the Change

The new label formats allow longer order codes.

Change Impact on Form, Fit, Function, or Reliability

Effective immediately after the PCN Issue Date, customers may receive goods with new label formats.

Cree Contact Information

If you have any questions regarding this PCN please contact:

Table 1 PCN Contact

Cree Contact:	Yvonne Mak
Cree Contact E-Mail:	ymak@cree.com
Cree Contact Phone:	+852 3602 9110
Cree Contact Fax Number:	
Address:	18 Science Park Avenue Hong Kong Science Park, Shatin, New Territories, Hong Kong