

Cree® High Brightness SMD LED Product Change Notification

Customer Name: All HB SMD customers

PCN Reference Number: CREE-PCN-0998

Date Issued: April 1, 2020

Please be advised that Cree has qualified a Minor change to HB SMD LED products and that we will begin shipping the affected product with the change 30 days after the PCN Issue Date.

Please review the additional PCN information below.

Affected Product

Table 1 provides a list of products affected by this Minor change:

Table 1 Affected Products List

Cree Part Number
All HB SMD products

Description of the Change

The tape leader and trailer quantities for HB SMD LEDs have been standardized. HB SMD LEDs change back to use black ESD adhesive tape to attach the cover-tape leader to the reel.

The current SMD LED packaging with five 10-g desiccant bags has been revised to use two 20-g desiccant bags and the placement of the desiccant bags in the polyethylene bag has been adjusted.

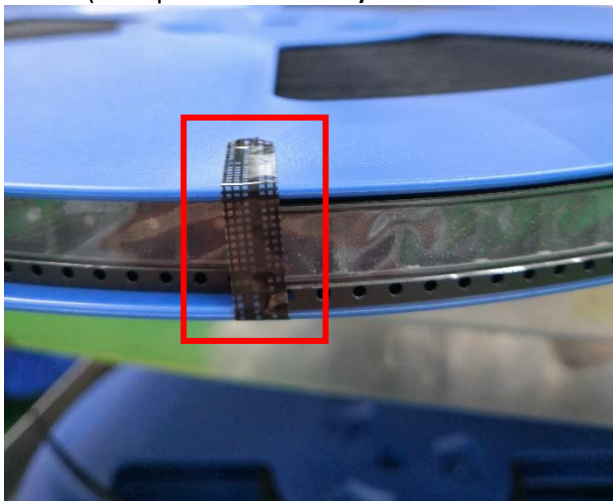
1. Current and new tape leader and trailer quantity details

Table 2 Current and New Tape Quantities

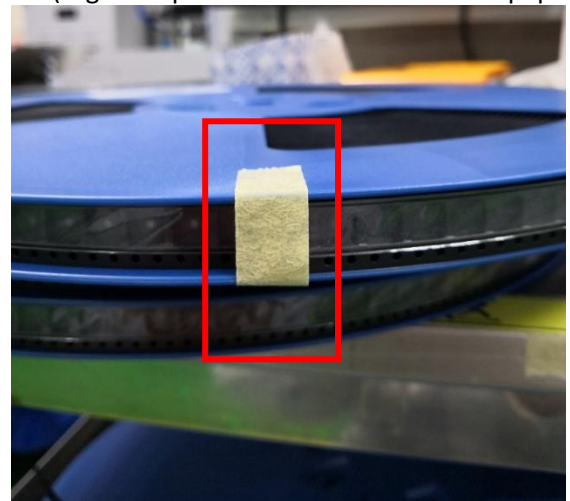
Products	Current			New		
	Leader (pcs)	Tape Qty (pcs)	Trailer (pcs)	Leader (pcs)	Tape Qty (pcs)	Trailer (pcs)
CLM4B-AKB-CWbXb343-OEE	100	7500	300	40	7500	100
LA6 series	50	3000	250	40	3000	100
CLM2C/CLM2D series	100	2300	250	40	2300	100
CLM2B series	10	700	80	40	600	100
LMU series (13" reel)	300	12800	500	40	12800	100
LMV series (13" reel)	400	12800	400	40	12800	100
LQ6 series	150	4000	200	20	4000	80
LR6 series	20	2000	180	20	2000	80

Products	Current			New		
	Leader (pcs)	Tape Qty (pcs)	Trailer (pcs)	Leader (pcs)	Tape Qty (pcs)	Trailer (pcs)
LS6 series	30	3000	180	20	3000	80
LT6 series	20	2500	250	40	3200	100
LV6 series	50	3000	150	20	3000	80
LX6 series	100	2800	150	20	2800	80
LY6 series	100	6500	300	40	6500	100
LP6 series	20	900	85	20	900	80
LU6 series	20	1000	80	20	1000	80
LS8 series	20	4000	200	40	5000	100
MX2835/LMU/LMV (7" reel)	20	3500	180	20	3500	80
MXB series	20	2500	180	40	9500	100
QLA6A/QLA6B series	50	2000	250	40	3000	100
LM3 series	20	2500	180	40	3000	100
UHD1110 series	400	10000	400	40	10000	100
SLV1S-FKB	200	7500	400	40	7500	100
LA1A/LA1B/LA1N/LM1/LM4 series	20	2000	180	40	2000	100
LA2A series						
LV1/SP301/LVB series						

2. Cover-tape ESD adhesive tape
Current (ESD qualified material)

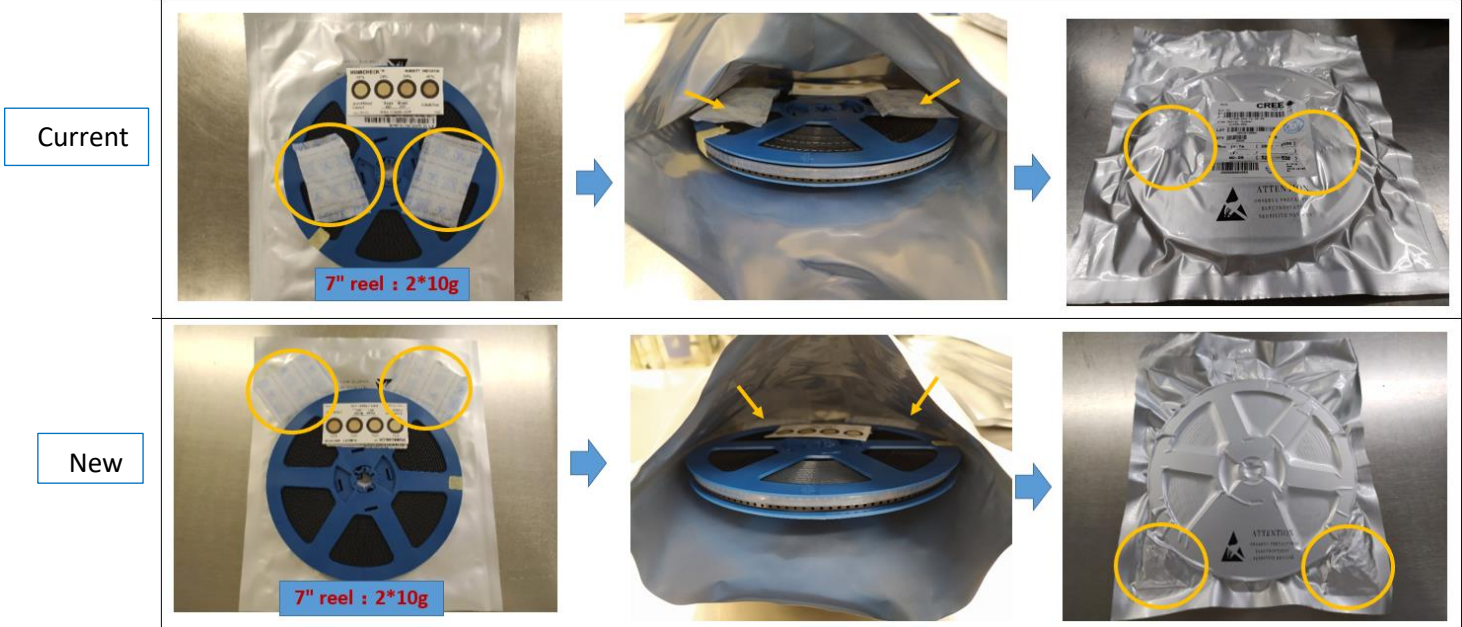


New (High-temperature-resistant adhesive paper)

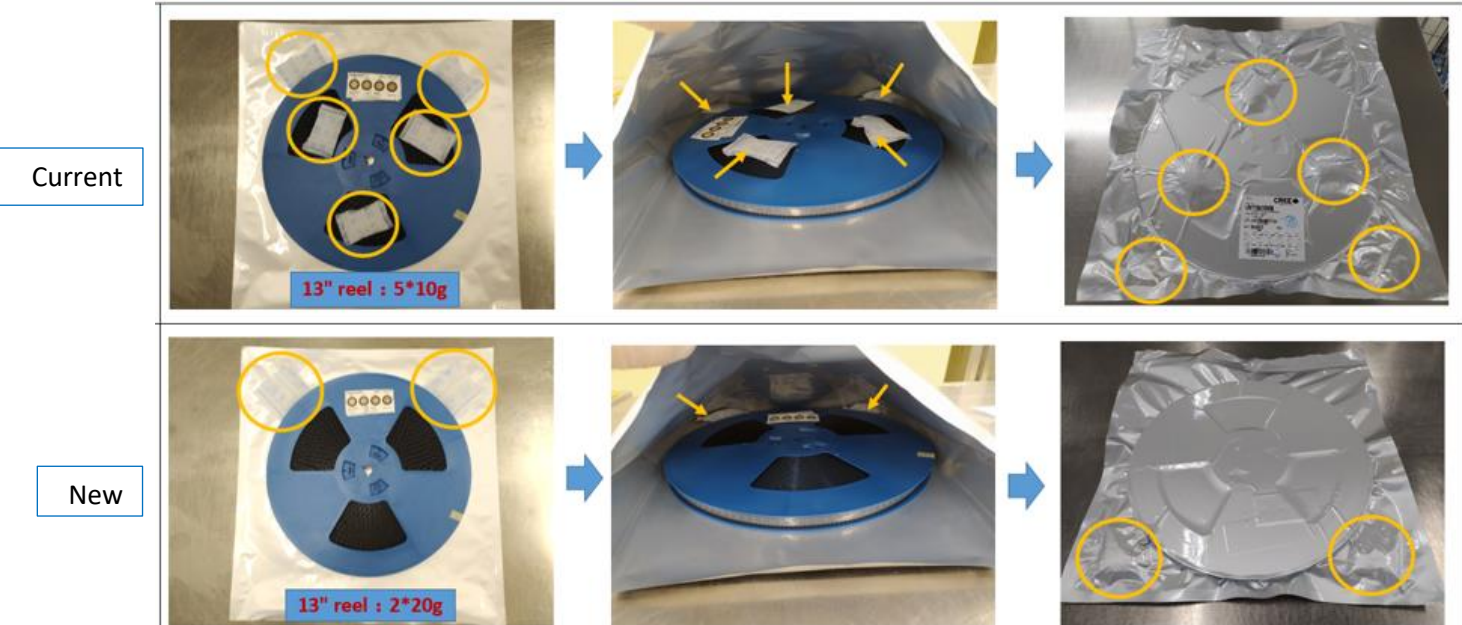


3. Adjust the desiccant bag quantity and placement

a. 7" reel packaging



b. 13" reel packaging



Reason for the Change

This change standardizes packaging of HB SMD LEDs.

Change Impact on Form, Fit, Function, or Reliability

This has no impact on the form, fit, function, or reliability of above series LEDs. We will begin shipping the affected product with the change 30 days after the PCN Issue Date. No customer action is required. This product change affects neither the order codes nor the bin codes.

Cree Contact Information

If you have any questions regarding this PCN please contact:

Table 2 PCN Contact

Cree Contact:	Sam Lai
Cree Contact E-Mail:	slai@cree.com