

Cree® CLM2B, CLM2D Series Product Change Notification

Customer Name: All CLM2B & CLM2D customers

PCN Reference Number: CREE-PCN-0889

Date Issued: August 22, 2019

Please be advised that Cree has qualified a Minor change to High Brightness CLM2B and CLM2D series LEDs and that we will begin shipping the affected product with the change no sooner than August 20, 2019.

Please review the additional PCN information below.

Affected Product

Table 1 provides a list of products affected by this Minor change:

Table 1 Affected Products List

Cree Part Number
CLM2B-REW-xxxxxxx
CLM2B-AEW-xxxxxxx
CLM2D-RCC-xxxxxxx
CLM2D-GCC-xxxxxxx
CLM2D-BCC-xxxxxxx
CLM2D-ACC-xxxxxxx
CLM2D-CCC-xxxxxxx
CLM2D-GPC-xxxxxxx
CLM2D-BPC-xxxxxxx
CLM2D-CPC-xxxxxxx

Description of the Change

The carrier tape pocket dimensions for CLM2B and CLM2D series LEDs have changed. The quantity per reel for CLM2B series LEDs is reduced from 700 pcs/reel to 600 pcs/reel. The current and new carrier tape pocket dimensions are shown below:

- Current and new carrier tape pocket dimensions:

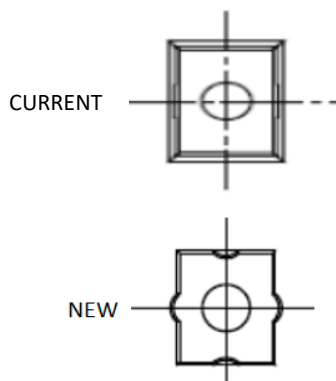
Carrier Tape (mm)	Length	Width	Height
Current	2.90	3.70	3.55
New	2.95	3.55	3.50

Note: All other tape dimensions are the same as those for the current tape.

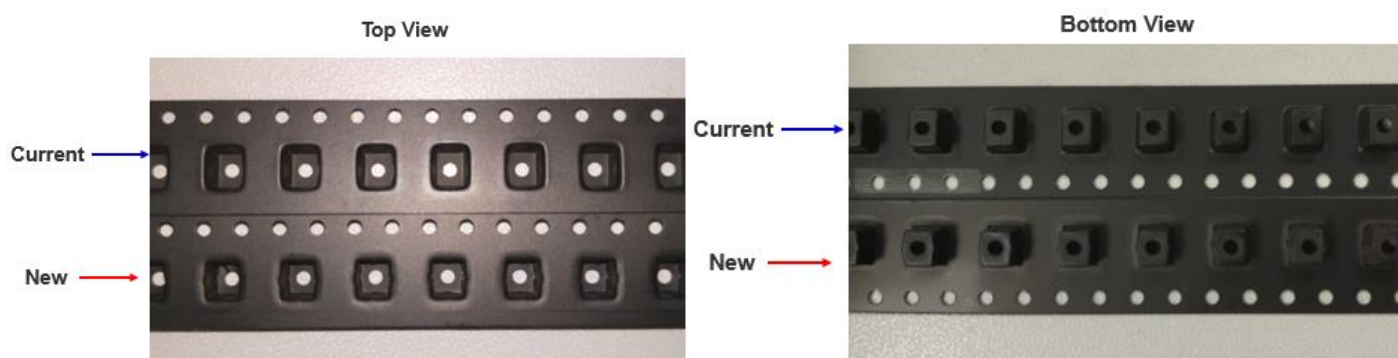
2. CLM2B series current and new quantity per reel:

Model	Current Quantity Per Reel	New Quantity Per Reel
CLM2B-REW	700	600
CLM2B-AEW	700	600

3. Pocket shape:



4. Current and new carrier tape appearance:



Reason for the Change

This change minimizes the risk of the LEDs shifting or tilting within the tape pocket during transportation.

Change Impact on Form, Fit, Function, or Reliability

This has no impact on the form, fit, function, or reliability of CLM2B and CLM2D series LEDs. This product change affects neither the order codes nor the bin codes.

We will begin shipping the affected product with the change no sooner than August 20, 2019. No customer action is required.

Cree Contact Information

If you have any questions regarding this PCN please contact:

Table 2 PCN Contact

Cree Contact:	Sam Lai
Cree Contact E-Mail:	slai@cree.com