

1 Products affected

Product hierarchy no. *				Part no.	SBU	Type / Description	Customer part no.
SBU	PG	PGU	Type				
02	005	012	0000001150	See list below	Power Entry Modules w/o Filters	Fuse drawer 2	

*SBU (2-digit) / PG (3-digit) / PGU (3-digit) / Type (10-digit)

List of part numbers affected							
4301.1014.01	4301.1014.02	4301.1014.03	4301.1014.04	4301.1014.05	4301.1014.06	4301.1014.07	4301.1014.08
4301.1014.10	4301.1014.11	4301.1014.12	4301.1014.13	4301.1014.14	4301.1014.15	4301.1014.18	4301.1014.20
4301.1014.22	4301.1014.23	4301.1014.24	4301.1014.25	4301.1014.26	4301.1014.29	4301.1014.30	4301.1014.34
4301.1014.35	4301.1014.37	4301.1014.38	4301.1014.39	4301.1014.41	4301.1014.49	4301.1014.51	4301.1014.52
4301.1014.53	4301.1014.54	4301.1024.01	4301.1024.02	4301.1024.03	4301.1024.05	4301.1024.06	4301.1024.07
4301.1024.08	4301.1024.11	4301.1024.12	4301.1024.14	4301.1024.15	4301.1024.22	4301.1024.23	4301.1024.24
4301.1024.25	4301.1024.26	4301.1024.34	4301.1024.36	4301.1024.37	4301.1024.38	4301.1024.45	4301.1024.46
4301.1024.47	4301.1024.48	4301.1214.01	4301.1214.02	4301.1214.03	4301.1214.04	4301.1214.05	4301.1214.06
4301.1214.07	4301.1214.08	4301.1214.10	4301.1214.11	4301.1214.12	4301.1214.13	4301.1214.14	4301.1214.15
4301.1214.16	4301.1214.19	4301.1214.22	4301.1214.23	4301.1214.24	4301.1214.25	4301.1214.28	4301.1214.29
4301.1214.31	4301.1214.32	4301.1214.33	4301.1214.34	4301.1214.36	4301.1214.40	4301.1214.41	4301.1214.42
4301.1214.44	4301.1214.52	4301.1214.54	4301.1214.55	4301.1224.03	4301.1224.05	4301.1224.06	4301.1224.08
4301.1224.12	4301.1224.14	4301.1224.15	4301.1224.23	4301.1224.24	4301.1224.25	4301.1224.29	4301.1224.39
4301.1224.41	4301.1401	4301.1401.G	4301.1402	4301.1403	4301.1403.G	4301.1404	4301.1405
4301.1407	4301.1409	4301.1411	4301.1413	4301.1415	4301.2814.01	4301.2814.02	4301.2814.03
4301.2814.06	4301.2814.08	4301.2814.10	4301.2814.12	4301.2814.15	4301.2814.41	4301.2824.03	4301.2824.06
4301.2824.08	4301.3536.03	4301.3536.06	4301.3536.08	4301.3537.06	4301.3537.08	4301.3537.11	4301.3537.20

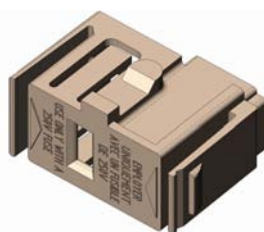
2 Type of change

New design of the guidance bar.

3 Detailed description of change

Finger grip

New

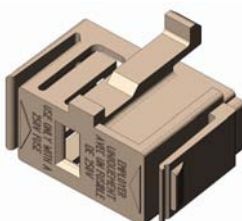


Old

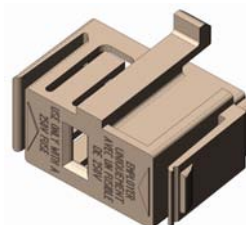


Extra safe

New



Old



Fusedrawer 2					0118.2133	
creation date	created by	release date	released by	notification no.	revision	page
2012-10-12	schaidro	2012-12-03	schaidro	24206	-	1 of 2

4 Reason of change

Modification guidance bar for new Power Entry Modules

5 Released date

Ww 50/2012

6 Impact of change and recommended action

Form: See chapter 3
Fit: n/a
Function: n/a
Production Site: n/a
Product Label: n/a

7 Reference Documents / Attachments

Kind of document	Document number	Remarks
		-

Fusedrawer 2					0118.2133	
creation date	created by	release date	released by	notification no.	revision	page
2012-10-12	schaidro	2012-12-03	schaidro	24206	-	2 of 2