

## 621029 Moulding improvement

PCN Number	PCNSTU260325
Publication Date	05/08/2024
Effectivity Date	Immediate
Change Summary	Moulding improvement

Dear Customer,

Anglia have been advised by our supplier that the tooling for 621029 has been updated with immediate effect, this is due to the old tooling being beyond its serviceable life. The supplier advised they have also taken this opportunity to revise the mouldings to improve the efficiency and yield of the production process.

The revised parts have some minor dimensional and cosmetic appearance changes but the form, fit, and function of the part remains the same.

Anglia Part Numbers Affected
621029

Anglia operates a strict FIFO system in our Distribution Centre facility; therefore, it may take time for this change to filter through to customer deliveries of the part number(s).

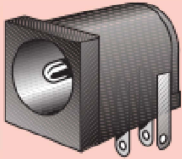
Please make the relevant person(s) in your organisation aware of this change.

Yours Sincerely

Anglia

## DC SOCKETS

A range of low cost commercial grade DC connectors. Black moulded bodies house switched contacts with connection by pcb terminations.  
Rated 12V, 1A. Choice of size.

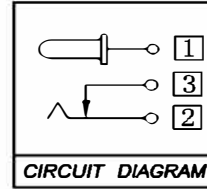


Size

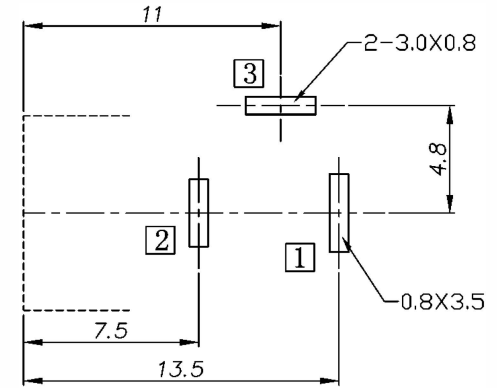
2.5mm

anglia  
Order Code  
621029

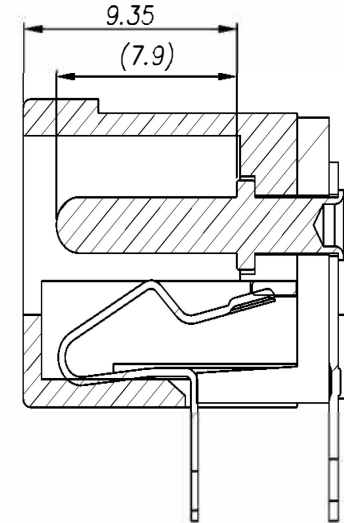
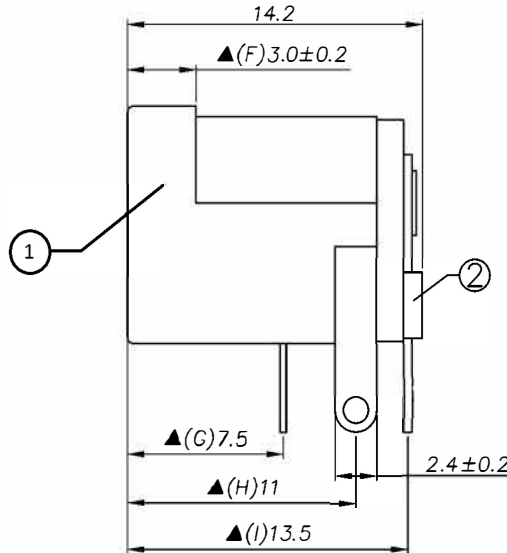
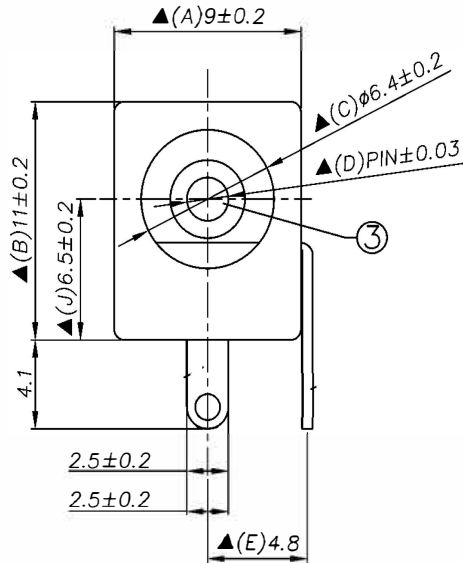
# Old Part

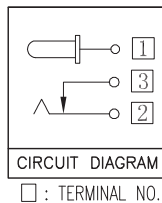
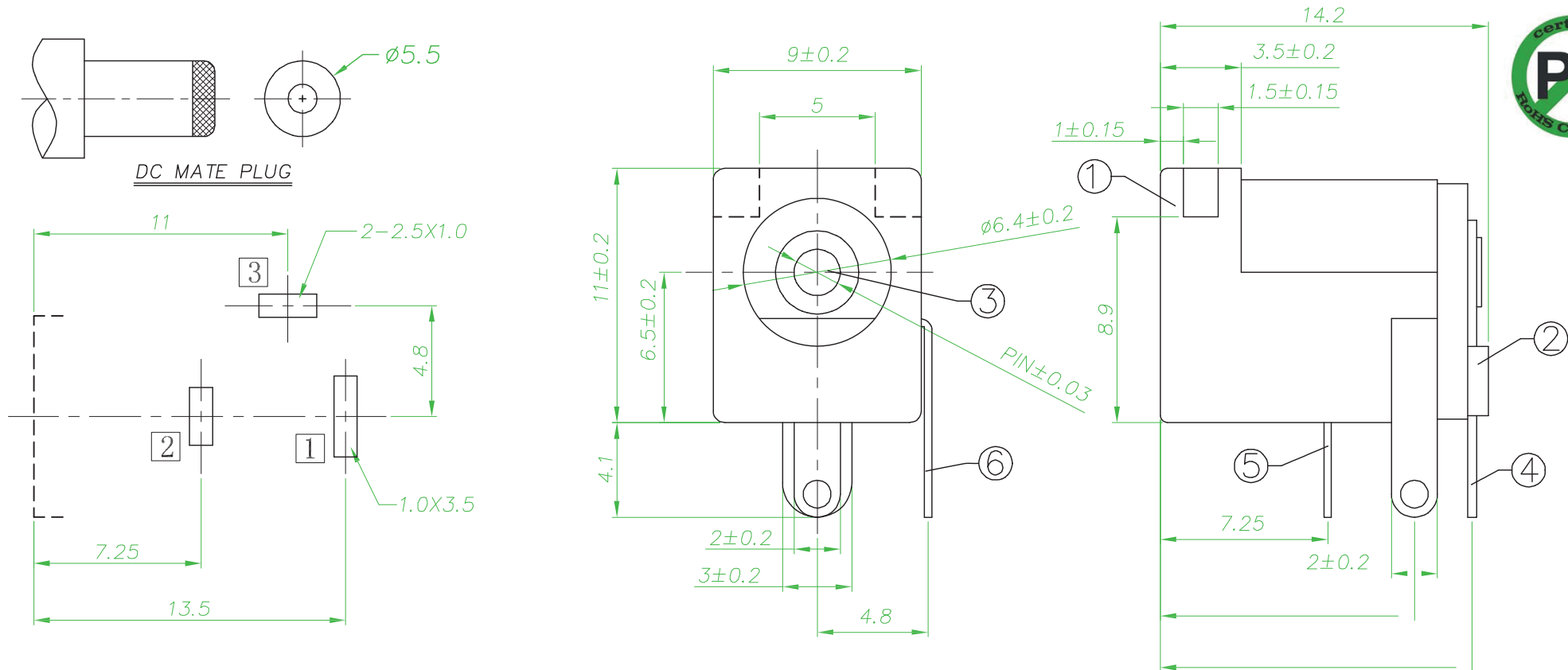


□ : TERMINAL NO.



P. C. B Layout





## SPECIFICATION

1. Rating : DC 20V 4A;
2. Contact resistance:  $\leq 30\text{m}\Omega$ ;
3. Insulation resistance:  $\geq 100\text{M}\Omega$  (DC500V);
4. Withstand voltage: 500VAC ;
5. Insertion and extraction force: 3-30N;
6. Life test: 5,000 cycles;
7. Operation temperature range:  $-20^{\circ}\text{C} \sim 70^{\circ}\text{C}$ ;
8. Preservative temperature range:  $-40^{\circ}\text{C} \sim 85^{\circ}\text{C}$ ;

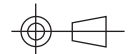
## Recommended PCB Layout (PCB TOLERANCE $\pm 0.05$ )

NO.	DESCRIPTION	QTY	MATERIAL	REMARK
①	Housing	1	PBT	
②	Cover	1	PBT	
③	Center pin	1	Brass	CuSn/Nickel platin
④	Center pin terminal	1	Brass t=0.40	Tin plating
⑤	Tip spring	1	Phosphor bronze t=0.30	Tin plating
⑥	Shunt terminal	1	Brass t=0.5	Tin plating

RoHS Compliant

**Part Number:** 621029

**Angle:**



**Title:** DC Power Jack

all dimensions in mm

**Tol.** (unless stated)

.x =  $\pm 0.30$