

XLamp® XR-C Amber, Red, Red-Orange LED Product Change Notification

Customer Name: XR-C Amber, Red, Red-Orange Customers

PCN Reference Number: PCN-06044
Date Issued: November-7, 2023

Please be advised that Cree LED qualified a Minor change to XLamp® XR-C amber, red, and red-orange and that we will begin shipping the affected product with the change 90 days after the PCN Issue Date.

Please review the additional PCN information below.

Affected Product

Table 1 provides a list of products affected by this Minor change:

Table 1 Affected Products List

Cree LED Part Number
XRCAMB-Lx-xxxx-xxxxx
XRCRDO-Lx-xxxx-xxxxx
XRCRED-Lx-xxxx-xxxxx

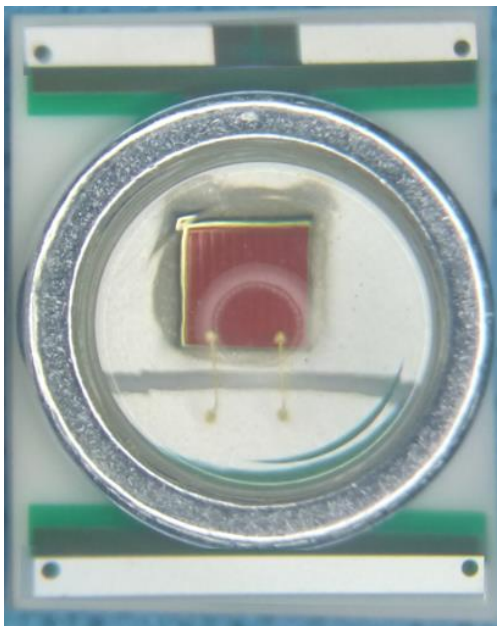
Description of the Change

The appearance of the solder mask visible on the panel will change from blue to green.

Frontside Current Appearance



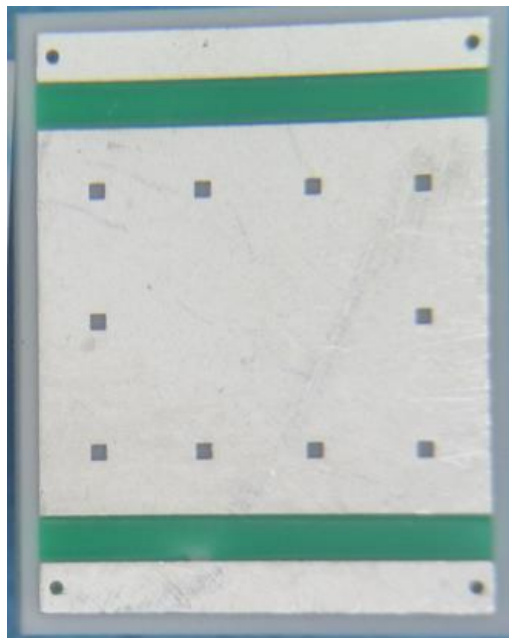
Frontside New Appearance



Backside Current Appearance



Backside New Appearance



Reason for the Change

This change is being made due to a process change by our supplier.

Change Impact on Form, Fit, Function, or Reliability

This has no impact on the form, fit, function, or reliability of the above series LEDs. No customer action is required. This product change affects neither the order codes nor the bin codes.

Key Dates

We will begin shipping the affected product with the change 90 days after the PCN issue date. Customers may receive shipments containing both current and new substrate versions until the inventory is depleted. Customers purchasing through a distributor will be further delayed seeing this change until the inventory is depleted from distributor stock. Table 2 provides estimated dates for key PCN Milestones based on information available at the date the PCN was issued. Any updates to these dates can be provided by the Cree LED contact listed in Table 3.

Table 2 Key PCN Estimated Dates

Proposed First Ship Date:	January 8, 2024
----------------------------------	------------------------

Cree LED Contact Information

If you have any questions regarding this PCN please contact:

Table 3 PCN Contact

Contact:	Cree LED Customer Service
Contact E-Mail:	CS@cree-led.com
Contact Phone:	US toll free: 1-844-273-3533 Outside the US: +1 919-313-5301
Address:	Cree LED, Inc. 4001 E Hwy 54, Suite 2000 Durham, NC 27709 USA