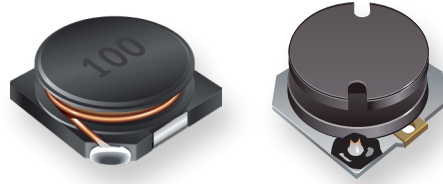




# PRODUCT CHANGE NOTIFICATION

## MAGNETICS



## Bourns® Model SDR1030, SDR1045, SDR1105, and SDR1305 Series SMD Power Inductors

### *Manufacturing Site and Process Changes*

*Riverside, California* - December 7, 2023 – To accommodate increasing production demands, effective December 15, 2023, the manufacturing site for the Model [SDR1030](#), [SDR1045](#), [SDR1105](#), and [SDR1305](#) Series SMD Power Inductors will be relocated to a higher-capacity manufacturing facility.

Bourns will also change its testing process from manual to semi-automatic for the Model SDR1030, SDR1045, and SDR1305 series.

Lists of the affected part numbers for the manufacturing site relocation and process change are included below.

Affected Part Numbers – Manufacturing Site Relocation				
SDR1030-2R7M	SDR1030-471K	SDR1045-151K	SDR1105-330KL	SDR1305-100M
SDR1030-4R7M	SDR1030-681K	SDR1045-221K	SDR1105-390KL	SDR1305-150M
SDR1030-6R8M	SDR1030-102K	SDR1045-331K	SDR1105-470KL	SDR1305-220M
SDR1030-100M	SDR1045-2R7M	SDR1045-471K	SDR1105-560KL	SDR1305-330M
SDR1030-150M	SDR1045-4R5M	SDR1045-681K	SDR1105-680KL	SDR1305-470M
SDR1030-220M	SDR1045-6R8M	SDR1045-102K	SDR1105-820KL	SDR1305-680M
SDR1030-330M	SDR1045-100M	SDR1045-223K	SDR1105-101KL	SDR1305-101K
SDR1030-470M	SDR1045-150M	SDR1105-100ML	SDR1105-151KL	SDR1305-151K
SDR1030-680M	SDR1045-220M	SDR1105-120ML	SDR1105-201KL	SDR1305-221K
SDR1030-101K	SDR1045-330M	SDR1105-150ML	SDR1305-2R5Y	SDR1305-331K
SDR1030-151K	SDR1045-470M	SDR1105-180ML	SDR1305-3R5Y	SDR1305-471K
SDR1030-221K	SDR1045-680M	SDR1105-220ML	SDR1305-4R6Y	SDR1305-681K
SDR1030-331K	SDR1045-101K	SDR1105-270ML	SDR1305-6R8Y	SDR1305-102K

*Users should verify that the described changes will not impact the performance of the product in their specific applications.*

IC23133

### Affected Part Numbers – Testing Process Change

SDR1030-2R7M	SDR1030-151K	SDR1045-150M	SDR1045-681K	SDR1305-330M
SDR1030-4R7M	SDR1030-221K	SDR1045-220M	SDR1045-102K	SDR1305-470M
SDR1030-6R8M	SDR1030-331K	SDR1045-330M	SDR1045-223K	SDR1305-680M
SDR1030-100M	SDR1030-471K	SDR1045-470M	SDR1305-2R5Y	SDR1305-101K
SDR1030-150M	SDR1030-681K	SDR1045-680M	SDR1305-3R5Y	SDR1305-151K
SDR1030-220M	SDR1030-102K	SDR1045-101K	SDR1305-4R6Y	SDR1305-221K
SDR1030-330M	SDR1045-2R7M	SDR1045-151K	SDR1305-6R8Y	SDR1305-331K
SDR1030-470M	SDR1045-4R5M	SDR1045-221K	SDR1305-100M	SDR1305-471K
SDR1030-680M	SDR1045-6R8M	SDR1045-331K	SDR1305-150M	SDR1305-681K
SDR1030-101K	SDR1045-100M	SDR1045-471K	SDR1305-220M	SDR1305-102K

There will be no product design or material changes as a result of the manufacturing plant relocation or testing process change. The inductors produced at the new manufacturing site with the new testing process will meet the same data sheet specifications as the inductors from the existing plant.

The form, fit, function, and country of origin of the affected part numbers will remain the same. The quality and reliability of the affected part numbers should be improved as a result of the testing process change. Traceability will be maintained through lot code and date code.

Samples are available upon request. Bourns recommends that customers test the affected part numbers in their specific applications for verification of satisfactory performance.

#### Implementation dates are as follows:

Date that deliveries of products manufactured at the new manufacturing site will begin: **December 15, 2023**

First date code using the above changes: **2350**