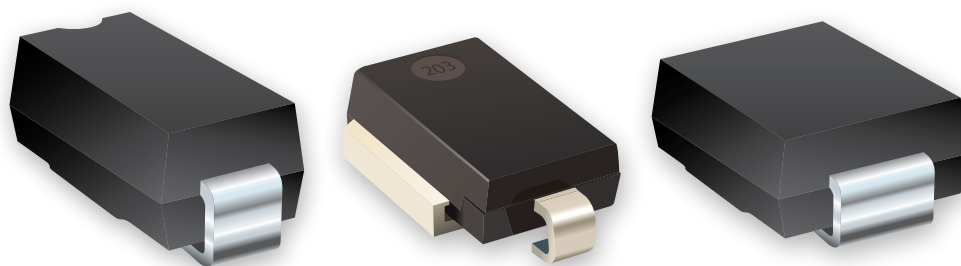


PRODUCT UPDATE MEMO

SEMICONDUCTORS

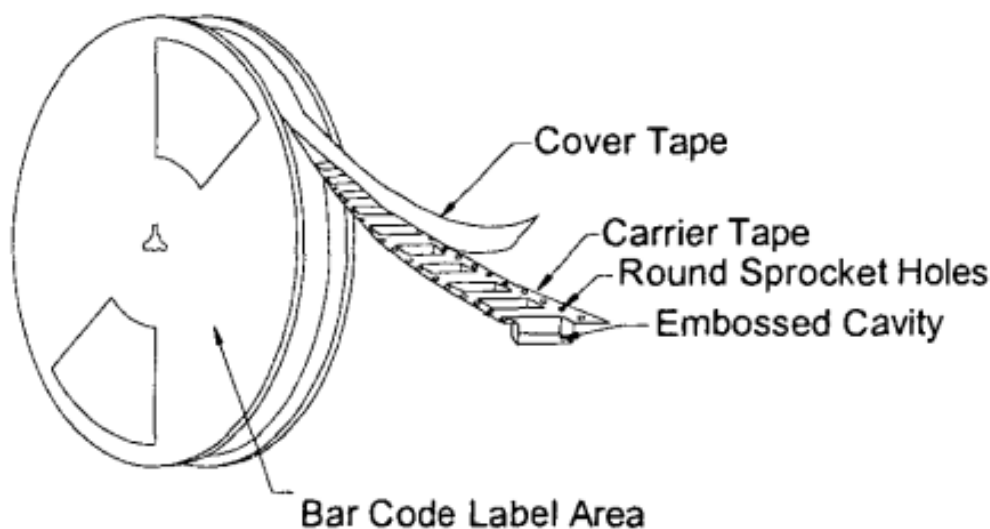


Label Position Correction for Tape Reels for TVS Products

Riverside, California – September 12, 2025 – Effective September 12, 2025, Bourns corrected the label position of the tape reel to comply with the EIA-481 standard on the data sheet. According to the EIA-481 standard on the datasheet, the position of the packaging label on the reel should be on the opposite side of the round sprocket holes on the carrier tape. A list of affected part numbers is included below.

This product update is not a Product Change Notification (PCN) but a corrective action. There are no changes to Country of Origin (COO) of the parts or changes to the fabrication and assembly sites. There are no changes to the form, fit, function, quality or reliability of the affected Bourns[®] Semiconductor TVS components. There has been no change to the label content. The correction only applies to the position of the label on the reel.

Below is an example from the EIA document ANSI/EIA-481-C-2003 illustrating how the label position will be changed to clearly indicate its location on the reel in accordance with the EIA-481 standard.



If you have any questions or need additional information, please feel free to [contact Customer Service/Inside Sales](#).

ESD2520

Affected Part Numbers

Product Family	Label location until September 8, 2025 (WK36)	Label location a s of September 8, 2025 (WK36)
<u>1.5SMC</u>	Label on the same side of round sprocket holes	Label on the side of the reel opposite the round sprocket holes
<u>1.5SMC-Q</u>	Label on the same side of round sprocket holes	Label on the side of the reel opposite the round sprocket holes
<u>15KPA-SD-Q</u>	Label on the same side of round sprocket holes	Label on the side of the reel opposite the round sprocket holes
<u>1.5SMBJ</u>	Label on the same side of round sprocket holes	Label on the side of the reel opposite the round sprocket holes
<u>5.0SMDJ</u>	Label on the same side of round sprocket holes	Label on the side of the reel opposite the round sprocket holes
<u>5.0SMDJ-Q</u>	Label on the same side of round sprocket holes	Label on the side of the reel opposite the round sprocket holes
<u>P4SMA</u>	Label on the same side of round sprocket holes	Label on the side of the reel opposite the round sprocket holes
<u>P4SMA-Q</u>	Label on the same side of round sprocket holes	Label on the side of the reel opposite the round sprocket holes
<u>P6SMB</u>	Label on the same side of round sprocket holes	Label on the side of the reel opposite the round sprocket holes
<u>P6SMB-Q</u>	Label on the same side of round sprocket holes	Label on the side of the reel opposite the round sprocket holes
<u>SMA6J</u>	Label on the same side of round sprocket holes	Label on the side of the reel opposite the round sprocket holes
<u>SMA6J-Q</u>	Label on the same side of round sprocket holes	Label on the side of the reel opposite the round sprocket holes
<u>SMAJ</u>	Label on the same side of round sprocket holes	Label on the side of the reel opposite the round sprocket holes
<u>SMAJ-Q</u>	Label on the same side of round sprocket holes	Label on the side of the reel opposite the round sprocket holes
<u>SMBJ</u>	Label on the same side of round sprocket holes	Label on the side of the reel opposite the round sprocket holes
<u>SMBJ-Q</u>	Label on the same side of round sprocket holes	Label on the side of the reel opposite the round sprocket holes
<u>SMCJ</u>	Label on the same side of round sprocket holes	Label on the side of the reel opposite the round sprocket holes
<u>SMCJ-Q</u>	Label on the same side of round sprocket holes	Label on the side of the reel opposite the round sprocket holes
<u>SMLJ</u>	Label on the same side of round sprocket holes	Label on the side of the reel opposite the round sprocket holes
<u>SMLJ-Q</u>	Label on the same side of round sprocket holes	Label on the side of the reel opposite the round sprocket holes
<u>SM8S-Q</u>	Label on the same side of round sprocket holes	Label on the side of the reel opposite the round sprocket holes
SM5S-Q	Label on the same side of round sprocket holes	Label on the side of the reel opposite the round sprocket holes
PTVS1-SMC	Label on the same side of round sprocket holes	Label on the side of the reel opposite the round sprocket holes

If you have any questions or need additional information, please feel free to [contact Customer Service/Inside Sales](#).