

## Change to Visual Appearance of XLamp® ML-E Royal Blue LEDs

### PCN-CM051

**Announcement Date: June 25, 2014**

**Implementation Date: Immediately**

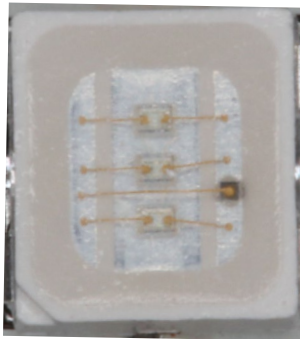
This notification applies to the following Cree order codes:

MLEROY-xx-xxxx-xxxxxxxxxx

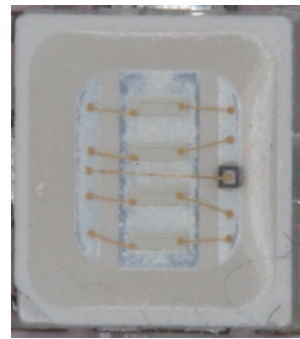
No customer action is required.

### CHANGE DESCRIPTION

Cree will begin shipment of XLamp® ML-E royal blue LEDs with different visual appearances: the visual appearance of the LED die and the die count inside the package. Examples of XLamp ML-E royal blue LEDs with different visual appearances are shown in the pictures below. All of these visually different XLamp ML-E LEDs meet the product specifications stated in the data sheet.



**Current Appearance**



**New Appearance**

### IMPACT OF CHANGE

Beginning June 24, 2014, Cree will began shipments of XLamp ML-E royal blue LEDs with different visual appearances. Each reel of XLamp ML-E royal blue LEDs will contain only LEDs with similar visual appearance. Cree will continue to ship the current appearance LEDs, so shipments may be mixed and contain either current appearance LEDs, new appearance LEDs, or both.

No customer action is required.