

## Change to Visual Appearance of XLamp® XP-E2 White LEDs

### PCN-CM050

**Announcement Date: June 20, 2014**

**Implementation Date: June 23, 2014**

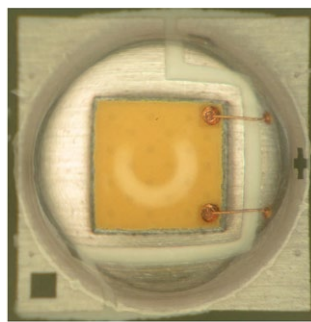
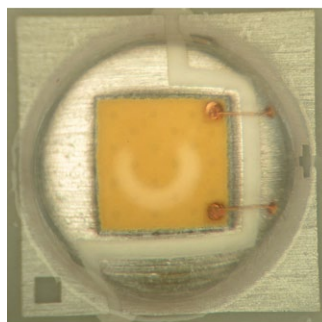
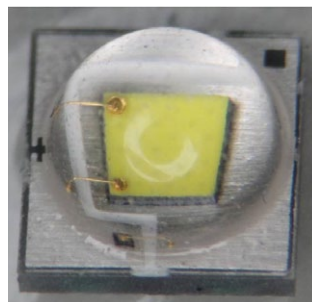
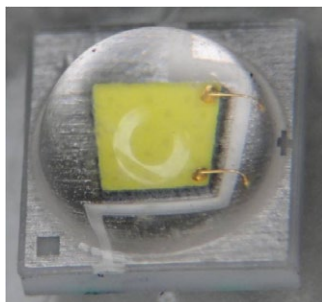
This notification applies to the following Cree order codes:

XPEBWT-xx-xxxx-xxxxx

No customer action is required.

### CHANGE DESCRIPTION

Cree will begin shipment of XLamp® XP-E2 white LEDs with different visual appearance of the substrate. Examples of XLamp XP-E2 white LEDs with different visual appearances are shown in the pictures below. All of these visually different XLamp XP-E2 LEDs meet the product specifications stated in the data sheet.



**Current Appearance**

**New Appearance**

### IMPACT OF CHANGE

Beginning June 23, 2014, Cree will begin shipments of XLamp XP-E2 white LEDs with different visual appearance. Cree will continue to ship current appearance LEDs, so each reel of XLamp XP-E2 white LEDs and shipments of XLamp XP-E2 white LEDs may be mixed and contain either current appearance LEDs, new appearance LEDs, or both.

No customer action is required.