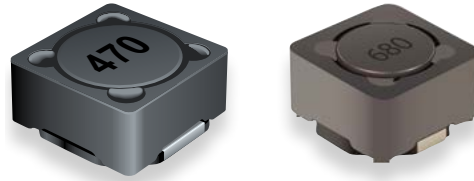


PRODUCT CHANGE NOTIFICATION

MAGNETICS



Bourns® Model SRR0735, SRR0735A, SRR0745 and SRR0745A Shielded Power Inductor Series

Design and Manufacturing Process Change



Riverside, California – April 28, 2021 – Effective November 13, 2021, Bourns will change the core, mounting base and ferrite shield design of the Model SRR0735, [SRR0735A](#), SRR0745 and [SRR0745A](#) Shielded Power Inductor Series. The changes include the addition of an indentation on the bottom of the core, a pin on the mounting base and spacers / terminal channels on the ferrite shield to maintain the best assembly alignment for these three components. A list of affected part numbers are included on the next two pages.

Change details:

Current Core Bottom Surface	Revised Core Bottom Surface
 <p data-bbox="456 1409 586 1440">Level surface</p>	 <p data-bbox="935 1409 1255 1440">Addition of indentation at center</p>
Current Mounting Base Surface	Revised Mounting Base Surface
 <p data-bbox="456 1818 586 1850">Level surface</p>	 <p data-bbox="935 1818 1214 1850">Addition of pin at center</p>

Users should verify that the described changes will not impact the performance of the product in their specific applications.

IC2142

Current Ferrite Shield	Revised Ferrite Shield
	 <ol style="list-style-type: none"> 1) Addition of four spacers 2) Addition of four terminal channels

In addition, the core-to-mounting base assembly will change from a manual to a semi-automated process.

The form of the inductor will be changed. The fit and function remain unchanged. The reliability and quality of the inductor should be improved from the material redesigns. Samples are available upon request.

Implementation dates are as follows:

Date that manufacturing of existing design will cease: **November 13, 2021**

Date that deliveries of modified product will begin: **November 14, 2021**

First date code using the above changes: **2146**

If you have any questions or need additional information, please feel free to contact [Customer Service/Inside Sales](#).

Affected Part Numbers				
SRR0735 Series				
SRR0735-100M	SRR0735-270M	SRR0735-680M	SRR0735-181M	SRR0735-471M
SRR0735-120M	SRR0735-330M	SRR0735-820M	SRR0735-221M	SRR0735-561M
SRR0735-150M	SRR0735-390M	SRR0735-101M	SRR0735-271M	SRR0735-681M
SRR0735-180M	SRR0735-470M	SRR0735-121M	SRR0735-331M	SRR0735-821M
SRR0735-220M	SRR0735-560M	SRR0735-151M	SRR0735-391M	SRR0735-102M

Affected Part Numbers				
SRR0735A Series				
SRR0735A-100M	SRR0735A-330M	SRR0735A-101M	SRR0735A-331M	SRR0735A-821M
SRR0735A-120M	SRR0735A-390M	SRR0735A-121M	SRR0735A-391M	SRR0735A-102M
SRR0735A-150M	SRR0735A-470M	SRR0735A-151M	SRR0735A-471M	
SRR0735A-180M	SRR0735A-560M	SRR0735A-181M	SRR0735A-471MV2	
SRR0735A-220M	SRR0735A-680M	SRR0735A-221M	SRR0735A-561M	
SRR0735A-270M	SRR0735A-820M	SRR0735A-271M	SRR0735A-681M	

Affected Part Numbers				
SRR0745 Series				
SRR0745-1R0M	SRR0745-120M	SRR0745-470M	SRR0745-181M	SRR0745-561MV4
SRR0745-2R2M	SRR0745-150M	SRR0745-560M	SRR0745-221M	SRR0745-681M
SRR0745-3R3M	SRR0745-180M	SRR0745-680M	SRR0745-271M	SRR0745-681V4M
SRR0745-4R7M	SRR0745-220M	SRR0745-820M	SRR0745-331M	SRR0745-821M
SRR0745-5R6M	SRR0745-270M	SRR0745-101M	SRR0745-391M	SRR0745-102M
SRR0745-6R8M	SRR0745-330M	SRR0745-121M	SRR0745-471M	
SRR0745-100M	SRR0745-390M	SRR0745-151M	SRR0745-561M	

Affected Part Numbers				
SRR0745A Series				
SRR0745A-1R0M	SRR0745A-120M	SRR0745A-470M	SRR0745A-181M	SRR0745A-681M
SRR0745A-2R2M	SRR0745A-150M	SRR0745A-560M	SRR0745A-221M	SRR0745A-821M
SRR0745A-3R3M	SRR0745A-180M	SRR0745A-680M	SRR0745A-271M	SRR0745A-102M
SRR0745A-4R7M	SRR0745A-220M	SRR0745A-820M	SRR0745A-331M	
SRR0745A-5R6M	SRR0745A-270M	SRR0745A-101M	SRR0745A-391M	
SRR0745A-6R8M	SRR0745A-330M	SRR0745A-121M	SRR0745A-471M	
SRR0745A-100M	SRR0745A-390M	SRR0745A-151M	SRR0745A-561M	