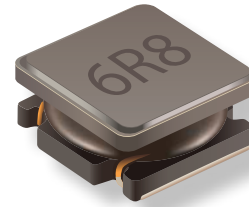
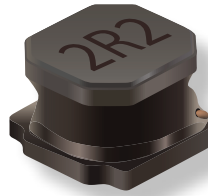




PRODUCT CHANGE NOTIFICATION

INDUCTIVE COMPONENTS



REVISED MARCH 19 & 26, 2021

Relocation of Manufacturing Plant

Select Model SRN Series Semi-shielded Power Inductors

Riverside, California – September 24, 2019 – Effective ~~December 5, 2020~~ **April 3, 2021**, the manufacturing location for select Bourns® Model SRN Semi-shielded Power Inductors will be relocating to a larger manufacturing facility to accommodate increasing production demands.

Affected Series		
SRN3010	SRN3012	SRN3015
SRN4018	SRN4018A	SRN5020
SRN5040	SRN6020	SRN6028

When the relocation is completed, the higher capacity, cross-town facility in Malaysia will enable Bourns to expand its production capacity for these popular chip inductors. Advanced Product Quality Planning (APQP) will be utilized and reliability tests on samples produced from the new plant will be performed to ensure ongoing AEC-Q200 compliance, and PPAP reports for applicable part numbers will be updated.

There will be no design, material or manufacturing process change as a result of the manufacturing plant relocation. The form, fit, function, quality, reliability, production lead time and the country of origin of these components will remain the same. Affected part numbers are listed on the next page.

Implementation dates are as follows:

Date that production will cease at existing plant: ~~December 5, 2020~~ **April 3, 2021**

Date that deliveries will begin at new plant: ~~December 6, 2020~~ **April 4, 2021**

First date code using the above changes: ~~2050~~ **2114**

Samples from the new manufacturing location will be available for testing in **September 2020**.

If you have any questions, need additional information, information, or would like to order samples for testing, please feel free to contact [Customer Service/Inside Sales](#).

Users should verify that the described changes will not impact the performance of the product in their specific applications.

IC1965

Affected Part Numbers

SRN3010-100M	SRN3012-470M	SRN4018-1R2Y	SRN4018A-220M	SRN5020-R47Y	SRN6020-4R7M
SRN3010-150M	SRN3012-4R7M	SRN4018-1R5Y	SRN4018A-221M	SRN5040-100M	SRN6020-5R6M
SRN3010-1R0Y	SRN3012-6R8M	SRN4018-220M	SRN4018A-2R2M	SRN5040-150M	SRN6020-6R8M
SRN3010-1R2Y	SRN3015-100M	SRN4018-221M	SRN4018A-2R7M	SRN5040-1R5Y	SRN6020-R50Y
SRN3010-1R5Y	SRN3015-101M	SRN4018-2R2M	SRN4018A-330M	SRN5040-220M	SRN6020-R80Y
SRN3010-220M	SRN3015-150M	SRN4018-2R7M	SRN4018A-3R3M	SRN5040-270M	SRN6028-100M
SRN3010-2R2M	SRN3015-180M	SRN4018-330M	SRN4018A-470M	SRN5040-2R2Y	SRN6028-101M
SRN3010-330M	SRN3015-1R0Y	SRN4018-331M	SRN4018A-4R7M	SRN5040-330M	SRN6028-150M
SRN3010-3R3M	SRN3015-1R5Y	SRN4018-3R3M	SRN4018A-680M	SRN5040-3R3M	SRN6028-1R5Y
SRN3010-470M	SRN3015-220M	SRN4018-470M	SRN4018A-6R8M	SRN5040-470M	SRN6028-220M
SRN3010-4R7M	SRN3015-2R2M	SRN4018-4R7M	SRN4018A-R82Y	SRN5040-4R7M	SRN6028-2R2Y
SRN3010-6R8M	SRN3015-330M	SRN4018-680M	SRN5020-100M	SRN5040-6R8M	SRN6028-330M
SRN3010-R47Y	SRN3015-3R3M	SRN4018-6R8M	SRN5020-150M	SRN5040-8R2M	SRN6028-3R0Y
SRN3012-100M	SRN3015-470M	SRN4018-R47MB	SRN5020-1R0Y	SRN6020-100M	SRN6028-3R3M
SRN3012-150M	SRN3015-4R7M	SRN4018-R82Y	SRN5020-1R5Y	SRN6020-150M	SRN6028-3R9M
SRN3012-1R0Y	SRN3015-6R8M	SRN4018A-100M	SRN5020-220M	SRN6020-1R5Y	SRN6028-470M
SRN3012-1R5Y	SRN3015-R47Y	SRN4018A-101M	SRN5020-2R2Y	SRN6020-220M	SRN6028-4R7M
SRN3012-220M	SRN4018-100M	SRN4018A-150M	SRN5020-330M	SRN6020-2R2Y	SRN6028-680M
SRN3012-2R2M	SRN4018-101M	SRN4018A-151M	SRN5020-3R3M	SRN6020-330M	SRN6028-6R0M
SRN3012-2R7M	SRN4018-150M	SRN4018A-1R0Y	SRN5020-4R7M	SRN6020-3R3M	SRN6028-6R2M
SRN3012-330M	SRN4018-151M	SRN4018A-1R2Y	SRN5020-5R6M	SRN6020-3R3Y	SRN6028-6R8M
SRN3012-3R3M	SRN4018-1R0Y	SRN4018A-1R5Y	SRN5020-6R8M	SRN6020-470M	SRN6028-R90Y