

## PIHER type PT10 (10mm round)

A range of top or side adjust, single turn, carbon element trimming potentiometers in a range of values from 100Ω to 10MΩ, with a power handling capability of 0.15W. The devices are manufactured with a polyester substrate, for enhanced stability and reliability, housed in a 10mm round dust proof enclosure. Adjustment may be made from either side, via a screwdriver slot, or by finger using thumbwheel or spindle actuators (supplied separately).



- ◆ Carbon element
- ◆ Polyester substrate
- ◆ 10mm round dust proof enclosure
- ◆ Top or side adjust, from either side
- ◆ Single turn
- ◆ Screwdriver or finger adjust
- ◆ Choice of actuators

### Specification

#### Electrical Characteristics

Resistance range .....	100Ω to 10MΩ
Resistance tolerance	
100Ω to 1MΩ .....	±20%
2.2MΩ to 4.7MΩ .....	±30%
10MΩ .....	+50, -30%
Equivalent noise resistance .....	≤3% or 3Ω (whichever is greater)
Resolution .....	Infinite
Effective travel .....	220° ±20°

#### Environmental Characteristics

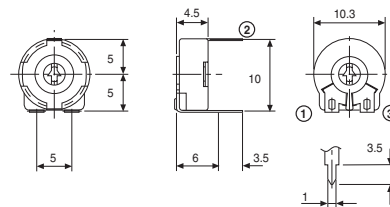
Power rating .....	0.15W at 40°C max.
Max voltage .....	200Vdc
Temperature range .....	-25°C to +70°C
Temperature coefficient .....	±300ppm/°C
Humidity .....	95% RH 500 hours at 40°C
total resistance shift .....	5% max.
Vibration .....	20G 2 hours at 10Hz to 50Hz
total resistance shift .....	2% max.
Load life .....	1000 hours 0.15W at 40°C
total resistance shift .....	5% max.
contact resistance variation .....	5% max.
Rotational life .....	500 cycles (10-15 cycles/minute)
total resistance shift .....	3% max.
contact resistance variation .....	3% max.

#### Physical Characteristics

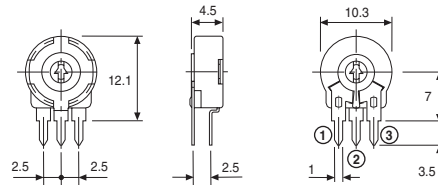
Operating torque .....	0.4 to 2Ncm
Stop torque .....	5Ncm min.
Wiper positioning .....	50% Nominal
Flammability .....	UL94V-0

### Dimensions (mm)

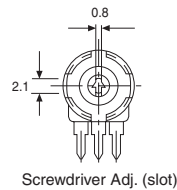
#### PT10LV10/PT10MV10 - Top Adjust, Horizontal Mounting



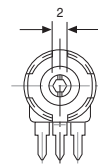
#### PT10LH01/PT10MH01 - Side Adjust, Vertical Mounting



#### adjustment options



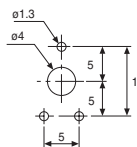
Screwdriver Adj. (slot)



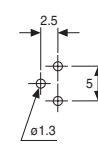
Finger Adj. (hex. hole)  
for use with actuators detailed opposite

### Footprint

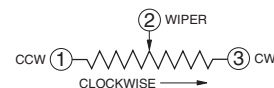
#### Top Adjust



#### Side Adjust



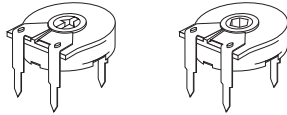
### Circuit Diagram



For the very latest information and news on the full range of PIHER products available from Anglia, visit our website :

[www.anglia.com/piher](http://www.anglia.com/piher)

Alternatively, contact our Sales Desk to discuss your specific requirements.

**PIHER type PT10 (10mm round)**
**PT10LV10 & PT10MV10**


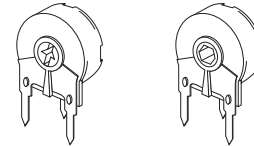
PT10LV10

PT10MV10

**Top Adjust, Horizontal Mounting**

Value (Ω)	anglia Order Code	
	PT10LV10	PT10MV10
	(Screwdriver Adj.)	(Finger Adj.)*
100R	032101Z	032101A
220R	032221Z	032221A
470R	032471Z	032471A
1K	032102Z	032102A
2K2	032222Z	032222A
4K7	032472Z	032472A
10K	032103Z	032103A
22K	032223Z	032223A
47K	032473Z	032473A
100K	032104Z	032104A
220K	032224Z	032224A
470K	032474Z	032474A
1M	032105Z	032105A
2M2	032225Z	032225A
4M7	032475Z	032475A
10M	032106Z	032106A

\* Actuators supplied separately- see below

**PT10LH01 & PT10MH01**


PT10LH01

PT10MH01

**Side Adjust, Vertical Mounting**

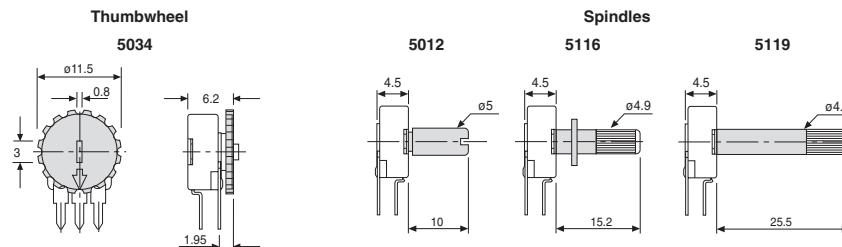
Value (Ω)	anglia Order Code	
	PT10LH01	PT10MH01
	(Screwdriver Adj.)	(Finger Adj.)*
100R	033101Z	033101A
220R	033221Z	033221A
470R	033471Z	033471A
1K	033102Z	033102A
2K2	033222Z	033222A
4K7	033472Z	033472A
10K	033103Z	033103A
22K	033223Z	033223A
47K	033473Z	033473A
100K	033104Z	033104A
220K	033224Z	033224A
470K	033474Z	033474A
1M	033105Z	033105A
2M2	033225Z	033225A
4M7	033475Z	033475A
10M	033106Z	033106A

\* Actuators supplied separately- see below

• Other configurations available  
 Please contact our Sales Desk for details

**Actuators type 5034, 5012, 5116 & 5119**

Moulded actuators for use with the finger adjust versions above. Choice of style and colour.

**Dimensions (mm)**


Actuator Style	Type	anglia Order Code								
		White	Black	Red	Blue	Brown	Green	Grey	Orange	Yellow
Thumbwheel	5034	032010	032011	032012	-	-	-	-	-	-
Spindle (10mm length)	5012	032016	032017	032018	032013	032014	032015	032019	032020	032021
Spindle (15.2mm length)	5116	032030	032031	032032	-	-	-	-	-	-
Spindle (25.5mm length)	5119	032022	032023	032024	-	-	-	-	-	-