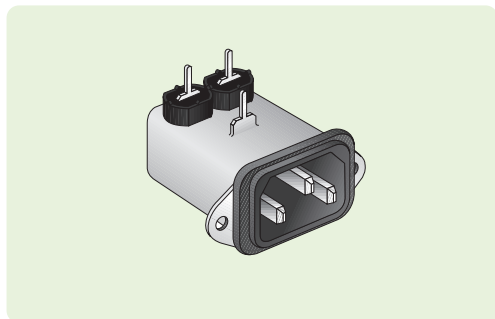


SCHAFFNER type FN9226

A series of rear panel mounting IEC power inlets with an integral filter, fitted with right angle termination pins suitable for pcb assembly. IEC950 compliant. Ultra compact design achieves an excellent performance to size ratio. Choice of 4 current ratings.

NEW



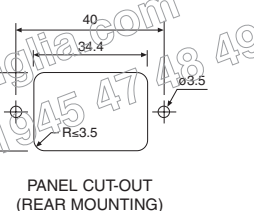
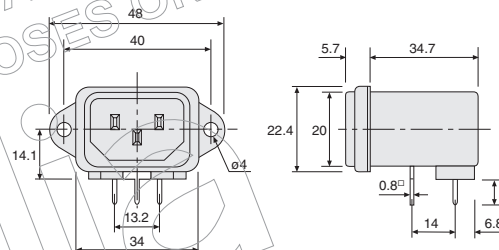
- ◆ IEC power inlet, rear panel mounting
- ◆ Integral mains filter unit with right angle **pcb mounting** pins
- ◆ IEC950 compliant
- ◆ Choice of current rating
- ◆ Ultra compact housing
- ◆ Excellent performance to size ratio



Specification

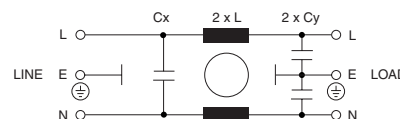
Voltage rating	250Vac
Line frequency	50/60Hz
Max. leakage	0.19mA/phase
Hipot test (1 min.)	
LN to E	2000Vac
L to N	760Vac
Capacitance	
Cx	0.047µF(X)
Cy	2200pF(Y) x 2
Inductance	
L	as listed
Weight	40g
Operating temperature range	-25°C to +85°C

Dimensions (mm)



Current Rating (Aac) at 40°C	Inductance (mH) L	Manf. Part No. & anglia Order Code
FN9226		
1	4.65	FN9226-1/02
3	1.24	FN9226-3/02
6	0.52	FN9226-6/02
10	0.27	FN9226-10/02

Schematic



||| SCHAFNER FACTORY OPTIONS

- Fast-on tabs in place of pcb pins
- Fitted bleed resistor but without Y capacitors, for medical applications

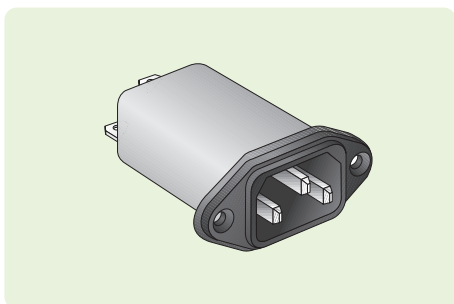
Please contact our Sales Desk for details.

**IEC Power Inlet
Mains Filters**
continued overleaf
> > > >

A RANGE OF IEC LEADS IS SHOWN IN THE CONNECTORS SECTION

SCHAFFNER type FN9222

A series of panel mounting IEC power inlets with an integral high performance filter. IEC950 compliant. Compact design achieves an excellent performance to size ratio. Option of screw fixing or snap-in mounting with rear terminations by 6.35mm (0.25in) fast-on tabs. Choice of 6 current ratings in each range with the additional option of a fitted bleed resistor. N.B. 12A and 15A ratings within the screw fixing range employ a hot condition IEC inlet.



NEW

- ◆ IEC power inlet
- ◆ Integral high performance mains filter unit
- ◆ IEC950 compliant
- ◆ Choice of current rating & fitted resistor
- ◆ Panel mounting, rear fast-on tabs
- ◆ Option of screw fixing or snap-in
- ◆ Excellent performance to size ratio



Specification

Voltage rating	250Vac
Line frequency	50/60Hz
Max. leakage	0.19mA/phase
Hipot test (1 min.)	
LN to E	2000Vac
L to N	1700Vdc
Capacitance	
Cx	0.1µF(X)
Cy	2200pF(Y) x 2
Inductance	
L	as listed
Resistance	
R	1MΩ (R types only)
Weight	40g
Operating temperature range	-25°C to +85°C

Current Rating (Aac) at 40°C Inductance (mH) L

FN9222 - screw fixing

1	12
3	2.5
6	0.78
10	0.225
12 (at 25°C) - hot inlet	0.11
15 (at 25°C) - hot inlet	0.075

Manf. Part No. & anglia Order Code	
Without Resistor	With Resistor*
FN9222-1/06	FN9222R-1/06
FN9222-3/06	FN9222R-3/06
FN9222-6/06	FN9222R-6/06
FN9222-10/06	FN9222R-10/06
FN9222-12/06	FN9222R-12/06
FN9222-15/06	FN9222R-15/06

FN9222S - snap-in

1	12
3	2.5
6	0.78
10	0.225
12 (at 25°C)	0.11
15 (at 25°C)	0.075

Manf. Part No. & anglia Order Code	
Without Resistor	With Resistor*
FN9222S-1/06	FN9222SR-1/06
FN9222S-3/06	FN9222SR-3/06
FN9222S-6/06	FN9222SR-6/06
FN9222S-10/06	FN9222SR-10/06
FN9222S-12/06	FN9222SR-12/06
FN9222S-15/06	FN9222SR-15/06

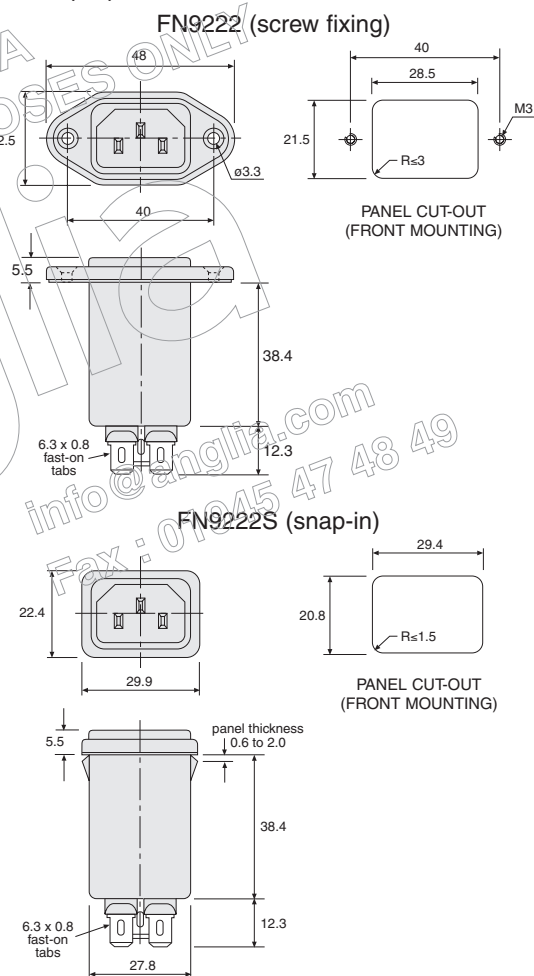
* Safety resistor internally fitted to the inlet. Discharges any residual energy when pins are exposed, should a load not be present.

||| SCHAFNER FACTORY OPTIONS

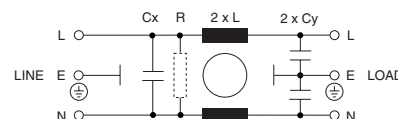
- Fitted bleed resistor but without Y capacitors, for medical applications
- Wire leads in place of fast-on tabs
- Rear insulating boots

Please contact our Sales Desk for details.

Dimensions (mm)



Schematic



IEC Power Inlet Mains Filters continued overleaf

> > > >

A RANGE OF IEC LEADS AND PUSH-ON CRIMP TERMINALS ARE SHOWN IN THE CONNECTORS SECTION