

45° ANGLE

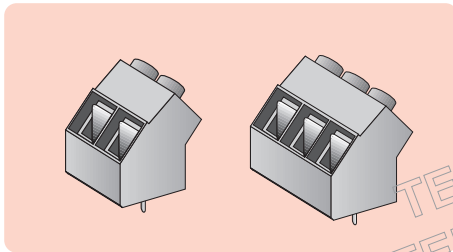
5mm PITCH

### LUMBERG type KRESW



45° angle, 5mm pitch blocks fitted with wire protection guards. Choice of 2 to 10 way, which may be mounted side by side to increase their permutation.

- ◆ 5mm pitch, 15A rating
- ◆ 14.2mm height
- ◆ 45° angle, side by side stackable
- ◆ Wire protection
- ◆ Grey UL94V-2 flame retardant bodies



Type

Manf. Part No. & Anglia Order Code

2 way  
3 way  
5 way  
8 way  
10 way

**KRESW2**  
**KRESW3**  
**KRESW5**  
**KRESW8**  
**KRESW10**

#### Specification

Body ..... UL94V-2 PA6.6  
Current rating† ..... 15A  
Voltage rating† ..... 250Vac  
Max. wire size ..... 4.0mm<sup>2</sup> (single)  
2.5mm<sup>2</sup> (stranded)  
Operating temperature range ..... -25°C to +100°C

† limited by pcb

#### Dimensions (mm)

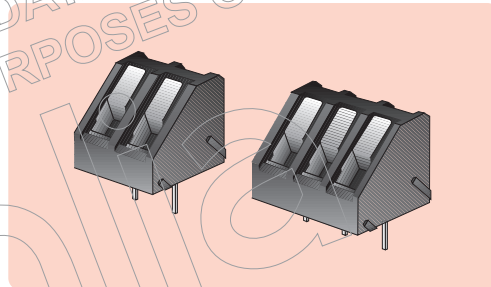
Length ..... 5 x no. ways  
Height ..... 14.2  
Depth ..... 14.7  
Pin Size ..... 0.7 x 1  
Pitch ..... 5

### TAICOM type TBA/AGN



45° angle, 5mm pitch blocks fitted with rising clamp type wire protection guards. Choice of 2 to 12 way which may be interlocked together to increase their permutation.

- ◆ 5mm pitch, 10A rating
- ◆ 12.0mm height
- ◆ 45° angle
- ◆ Interlocking (double dovetail)
- ◆ Rising clamp wire protection
- ◆ Combi screws suit pneumatic tools
- ◆ Black UL94V-0 flame retardant bodies



Type

Manf. Part No. & Anglia Order Code

2 way  
3 way  
4 way  
5 way  
6 way  
7 way  
8 way  
9 way  
10 way  
11 way  
12 way

**TBA02AGN**  
**TBA03AGN**  
**TBA04AGN**  
**TBA05AGN**  
**TBA06AGN**  
**TBA07AGN**  
**TBA08AGN**  
**TBA09AGN**  
**TBA10AGN**  
**TBA11AGN**  
**TBA12AGN**

Other ways available to special order

#### Specification

##### Materials

Mouldings ..... Black glass filled polyamide to UL94V-0  
Terminals ..... Brass, tin plated  
Screws ..... M2.5, galvanised steel chromate finish  
Rising clamps ..... Brass, tin plated

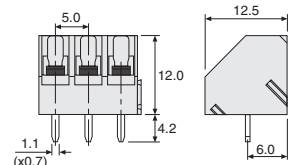
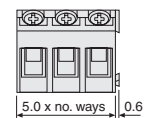
##### Ratings (limited by pcb)

Current rating ..... 10A  
Voltage rating ..... 300Vac  
Oper. temp. range ..... -33°C to +120°C

##### Wire Size

Range ..... 12 to 22awg  
Metric capacity ..... 4.0mm<sup>2</sup> max. (solid)  
2.5mm<sup>2</sup> max. (stranded)

#### Dimensions (mm)



45° ANGLE

5.08mm PITCH

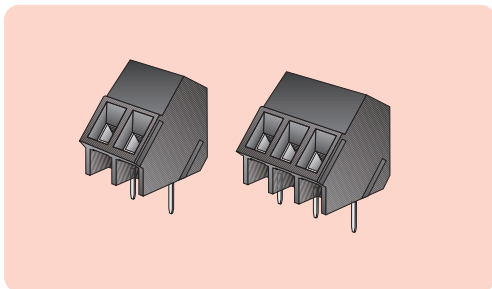
TAICOM type TBA/HGN



45° angle, 5.08mm pitch blocks fitted with rising clamp type wire protection guards. Choice of 2 to 12 way which may be interlocked together to increase their permutation.



- ◆ 5.08mm pitch, 10A rating
- ◆ 15.5mm height
- ◆ 45° angle
- ◆ Interlocking (double dovetail)
- ◆ Rising clamp wire protection
- ◆ Combi screws suit pneumatic tools
- ◆ Black UL94V-0 flame retardant bodies



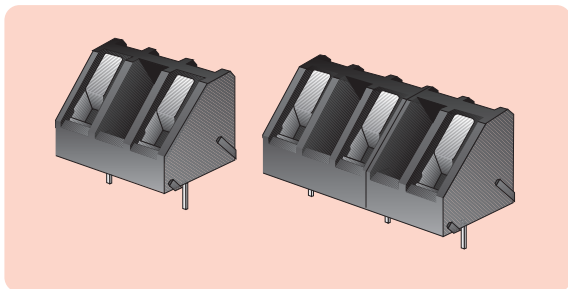
10mm PITCH

TAICOM type TBA/BGN



45° angle, 10mm pitch blocks fitted with rising clamp type wire protection guards. Wider spacing, using alternate positions in the mouldings, offers improved isolation. Choice of 2 to 12 way.

- ◆ 10mm pitch, 10A rating
- ◆ 12.0mm height
- ◆ 45° angle
- ◆ Wide pin spacing for 240Vac
- ◆ Rising clamp wire protection
- ◆ Combi screws suit pneumatic tools
- ◆ Black UL94V-0 flame retardant bodies



Type	Manf. Part No. & anglia Order Code
2 way	TBA02HGN
3 way	TBA03HGN
4 way	TBA04HGN
5 way	TBA05HGN
6 way	TBA06HGN
7 way	TBA07HGN
8 way	TBA08HGN
9 way	TBA09HGN
10 way	TBA10HGN
11 way	TBA11HGN
12 way	TBA12HGN

Other ways available to special order

Type	Manf. Part No. & anglia Order Code
2 way	TBA02BGN
3 way	TBA03BGN
4 way	TBA04BGN
5 way	TBA05BGN
6 way	TBA06BGN
7 way	TBA07BGN
8 way	TBA08BGN
9 way	TBA09BGN
10 way	TBA10BGN
11 way	TBA11BGN
12 way	TBA12BGN

Other ways available to special order

Specification

Materials

Mouldings ..... Black thermoplastic to UL94V-0  
 Terminals ..... Brass, tin plated  
 Screws ..... M2.5, galvanised steel  
 Rising clamps ..... Brass, tin plated

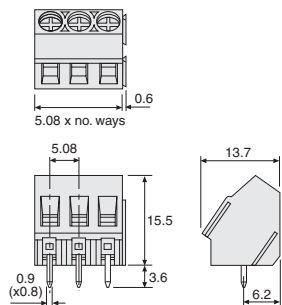
Ratings (limited by pcb)

Current rating ..... 10A  
 Voltage rating ..... 300Vac  
 Oper. temp. range ..... -30°C to +105°C

Wire Size

Range ..... 12 to 24awg  
 Metric capacity ..... 4.0mm<sup>2</sup> max. (solid)  
 2.5mm<sup>2</sup> max. (stranded)

Dimensions (mm)



Specification

Materials

Mouldings ..... Black glass filled polyamide to UL94V-0  
 Terminals ..... Brass, tin plated  
 Screws ..... M2.5, galvanised steel chromate finish  
 Rising clamps ..... Brass, tin plated

Ratings (limited by pcb)

Current rating ..... 10A  
 Voltage rating ..... 380Vac  
 Oper. temp. range ..... -33°C to +120°C

Wire Size

Range ..... 12 to 22awg  
 Metric capacity ..... 4.0mm<sup>2</sup> max. (solid)  
 2.5mm<sup>2</sup> max. (stranded)

Dimensions (mm)

