

PROFESSIONAL

PLUGS

STUDIOMATE type A15/16/17

Robust DC plugs in a range of industry standard diameters and lengths. Black moulded bodies house solder terminals with integral cable clamp. High quality nickel plated contacts ensure excellent conductivity throughout operational life. 1.3mm and long reach 2.1/2.5mm plugs incorporate a cable strain relief which is available as an option on the short reach.

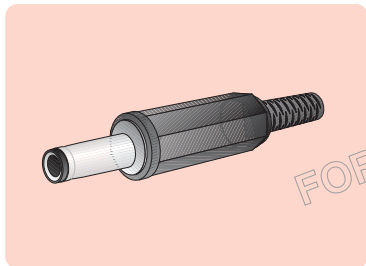
ELECTRICAL

Current rating	1A
Working voltage	0.5A (1.3mm)
Withstand voltage	16Vdc
Insulation resistance (min.).....	500Vac for 1 minute
	100MΩ at 500Vdc

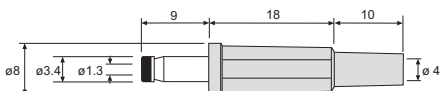
MATERIALS

Housing.....	ABS resin
Contacts	Brass, nickel plated
Insulator	ABS resin
	PVC/ebonite/polycarbonate (1.3mm)

1.3mm



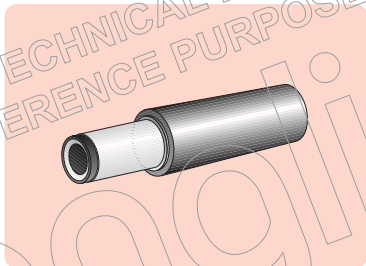
Dimensions (mm)



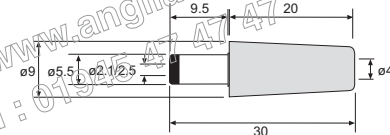
With Cable Strain Relief

Size	Manf. Part No. & anglia Order Code
1.3mm	A17F100

2.1/2.5mm (short reach)



Dimensions (mm)



Without Cable Strain Relief (Standard) as illustrated.

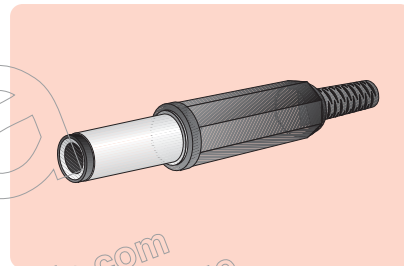
Size	Manf. Part No. & anglia Order Code
2.1mm	A16F100
2.5mm	A15F100

With Cable Strain Relief

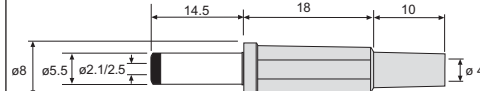
Higher quality construction with phenolic terminal insulator. Body style similar to other plug types with cable strain relief. Overall body dia. 11, length 37.

Size	Manf. Part No. & anglia Order Code
2.1mm	A16F101
2.5mm	A15F101

2.1/2.5mm (long reach)



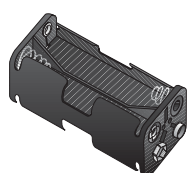
Dimensions (mm)



With Cable Strain Relief

Size	Manf. Part No. & anglia Order Code
2.1mm	A16F110
2.5mm	A15F110

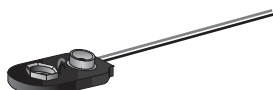
BATTERY HOLDERS & CONNECTORS



● Standard Cell



● Coin Cell



Refer to pages 22-28 in the Batteries & Accessories section

PROFESSIONAL

SOCKETS

STUDIOMATE type A15/16/17

The Studiomate range of DC sockets is designed to answer the needs of today's requirements for power connections to portable or rechargeable equipment. All sockets have integral switching via a precision spring contact. Installation is either by panel mounting (choice of insulated or metal body) or pcb mounting (insulated only).

ELECTRICAL

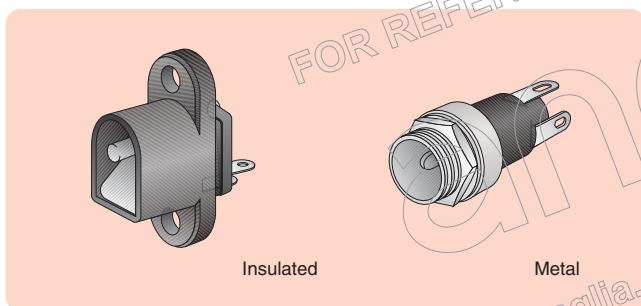
Current rating	2.5A (A15M4/A16M4)
	1.5A (A17M5)
	1.0A (all others)
Working voltage	16Vdc
	6.3Vdc (A17M5)
Withstand voltage	500Vac (250Vac A17M5)
	between adjacent open terminals for 1 minute
Initial contact resistance	≤50mΩ
Insulation resistance	100MΩ at 500Vdc
	100MΩ at 250Vdc (A17M5)

MATERIALS

Panel Mount (Insulated) & PCB Mount (Insulated)	
Housing	Black PBT (UL94V-0)
Centre pin	Brass, nickel plated
Pin 1 (spring)	Phosphor bronze, tin plated
Pin 2/Pin 3	Brass, tin plated
Panel Mount (Metal)	
Housing	Brass, nickel plated
Insulator	Black PBT (UL94V-0)
Centre pin	Brass, nickel plated
Pin 1 (spring)	Phosphor bronze, silver plated
Pin 2/Pin 3	Brass, silver plated
Operating temperature range	-20°C to +70°C

Panel Mount (Insulated or Metal)

PCB Mount (Insulated)



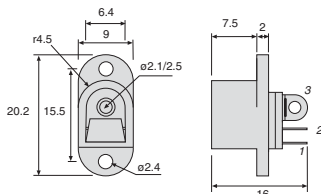
Insulated – 2.1/2.5mm

Metal – 2.1/2.5mm

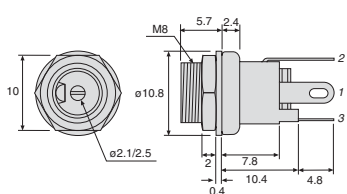
Insulated – 1.3mm

Insulated – 2.1/2.5mm

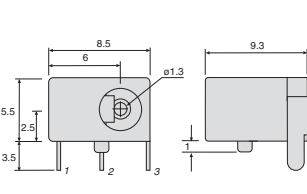
Dimensions (mm)



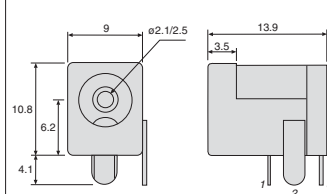
Dimensions (mm)



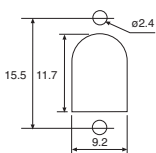
Dimensions (mm)



Dimensions (mm)



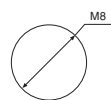
panel cut-out



schematic



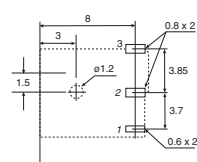
panel cut-out



schematic



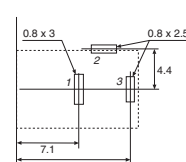
Footprint (pin view)



schematic



Footprint (pin view)



schematic



Size

Manf. Part No. & Anglia Order Code

2.1mm
2.5mm

A16M400
A15M400

Size

Manf. Part No. & Anglia Order Code

2.1mm
2.5mm

A16M300
A15M300

Size

Manf. Part No. & Anglia Order Code

1.3mm

A17M510

Size

Manf. Part No. & Anglia Order Code

2.1mm
2.5mm

A16M500
A15M500

FOR COMMERCIAL GRADE DC SOCKETS SEE PAGE 253