

4.2mm PITCH



TAICOM type TMF

A range of industry compatible, dual row, high current/high density connectors suitable for both power and signal applications. Comprises of crimp terminal housings, either receptacles (socket contacts) or plugs (pin contacts), and square pin pcb headers, either straight or right angle. Available throughout in 2 to 12 ways the various connector combinations will provide a choice of wire-to-wire, wire-to-panel or wire-to-board mounting orientations. Other ways are available to special order.

Specification

Materials & Finishes

Insulators
Crimp terminal housings & pin headers Natural colour Nylon 66 flame retardant to UL94V-2

Contacts/Pins
Crimp terminals Phosphor bronze or brass, tin plated
Pin headers Brass, tin plated

Electrical

Current rating 7A
Voltage rating 600Vac
Proof voltage 1500Vac
Contact resistance (max.) 20mΩ
Insulation resistance (min.) 1000MΩ

Environmental

Operating temperature range.... -25°C to +125°C

- ◆ Suitable for **power** & signal applications
- ◆ Industry compatible, **4.2mm pitch**
- ◆ For **wire-to-wire, wire-to-panel & wire-to-board** connection
- ◆ 2 to 12 ways
- ◆ Flame retardant insulators
- ◆ Locking action prevents accidental disconnection

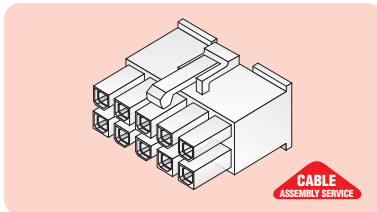
CRIMP TERMINAL HOUSINGS

Option of free mounting receptacles with socket contacts or free/panel mounting plugs with pin contacts. Suitable for mating together for wire-to-wire or wire-to-panel connectivity. An integral ramp/releasable barb type locking system prevents accidental disconnection. Furthermore, the receptacles will also mate with the pin headers for wire-to-board use. Moulded in flame retardant Nylon 66 to UL94V-2, the housings are polarised to ensure correct orientation when mating. The crimp terminals are supplied separately and are available loose or on reels.

RECEPTACLES

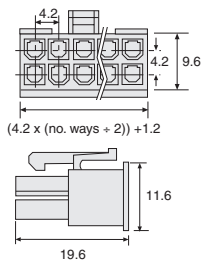
free mounting

Unloaded housings designed to accommodate the socket contact crimp terminals listed below. Incorporate releasable locking barb. Natural colour mouldings. Terminals are offered in two wire sizes each available loose, or on reels with end chain arrangement to suit crimping machines.



Housings

Dimensions (mm)



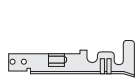
Type

- 2 way
- 4 way
- 6 way
- 8 way
- 10 way
- 12 way

Manf. Part No. & **anglia** Order Code

- TMF02FC
- TMF04FC
- TMF06FC
- TMF08FC
- TMF10FC
- TMF12FC

Crimp Terminals (open barrel) - socket contact



Wire Size	Type
24 to 26awg (0.2mm ² to 0.13mm ²)	Reel - end chain Loose
16 to 22awg (1.3mm ² to 0.3mm ²)	Reel - end chain Loose

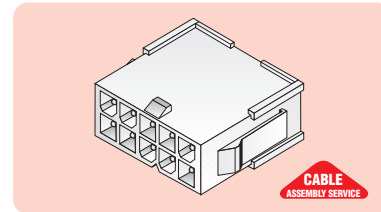
Manf. Part No. & **anglia** Order Code

- TM4011
- TM4013
- TM4012
- TM4014

PLUGS

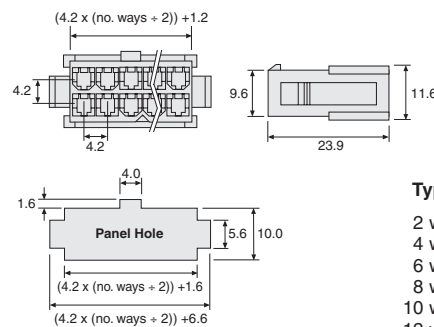
free or panel mounting

Unloaded housings designed to accommodate the pin contact crimp terminals listed below. Incorporate integral locking ramp. Natural colour mouldings. Terminals are offered in two wire sizes each available loose, or on reels with end chain arrangement to suit crimping machines.



Housings

Dimensions (mm)



Type

- 2 way
- 4 way
- 6 way
- 8 way
- 10 way
- 12 way

Manf. Part No. & **anglia** Order Code

- TMF02MC
- TMF04MC
- TMF06MC
- TMF08MC
- TMF10MC
- TMF12MC

Crimp Terminals (open barrel) - pin contact



Wire Size	Type
24 to 26awg (0.2mm ² to 0.13mm ²)	Reel - end chain Loose
16 to 22awg (1.3mm ² to 0.3mm ²)	Reel - end chain Loose

Manf. Part No. & **anglia** Order Code

- TM4016
- TM4018
- TM4017
- TM4019



4.2mm PITCH continued overleaf > > >

4.2mm PITCH

continued

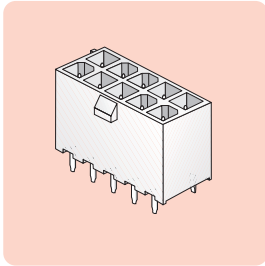
NEW

PIN HEADERS

PCB mounting 1.14mm (0.045in) square pin headers with natural colour Nylon 66 insulators, flame retardant to UL94V-2. Incorporate integral locking ramp. Choice of straight or right angle.

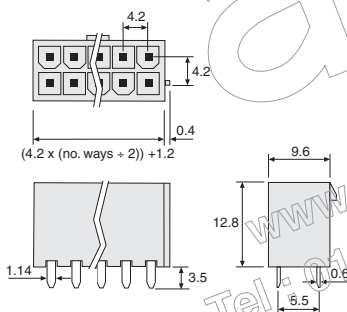
STRAIGHT

Vertical mounting headers which will mate with the receptacles fitted with socket contacts.

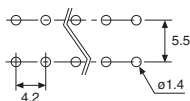


Type	Manf. Part No. & Anglia Order Code
2 way	TMF02MS
4 way	TMF04MS
6 way	TMF06MS
8 way	TMF08MS
10 way	TMF10MS
12 way	TMF12MS

Dimensions (mm)

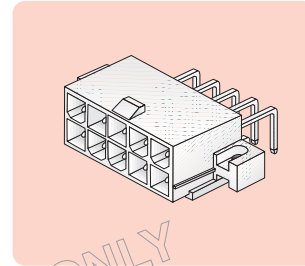


Footprint



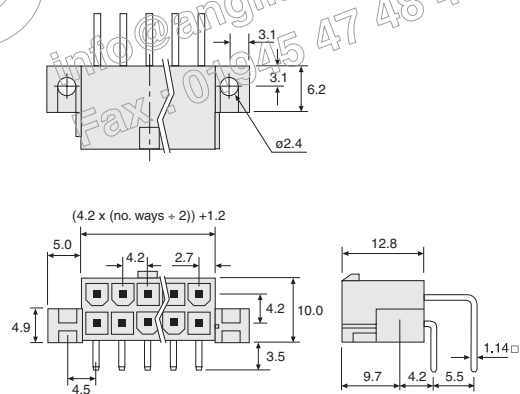
RIGHT ANGLE

Right angle mounting headers which will mate with the receptacles fitted with socket contacts. Side flanges enable body to be secured to the pcb. Headers without flanges are available to special order.



Type	Manf. Part No. & Anglia Order Code
2 way	TMF02MR1
4 way	TMF04MR1
6 way	TMF06MR1
8 way	TMF08MR1
10 way	TMF10MR1
12 way	TMF12MR1

Dimensions (mm)



Footprint

