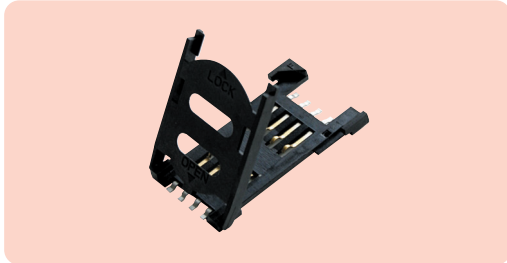


**TAICOM type TSIM**



A surface mount connector designed to accommodate SIM cards to GSM Standard 11.11 by use of a hinged cover that allows for greater versatility in the positioning of the holder on a board. Features an industry standard 8 way contact arrangement and a low profile body offering a height of only 2.3mm when installed. Housing is moulded from black flame retardant PPS material to UL94V-0 with contacts gold plated on the contact mating areas. Supplied taped and reeled.



- ◆ Accommodates SIM cards to GSM Standard 11.11
- ◆ Card insertion via hinged cover for greater versatility in connector positioning
- ◆ Industry standard **8 way** contact arrangement
- ◆ Low profile surface mount package
- ◆ 2.3mm installed connector height
- ◆ Black flame retardant housing
- ◆ Supplied taped & reeled

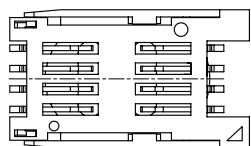
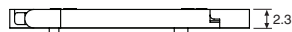
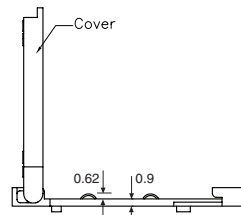
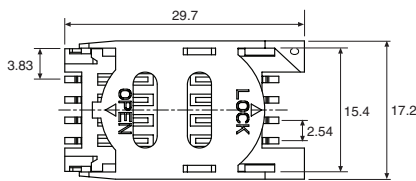
**Specification**

Contacts .....	Copper alloy, gold plated on contact areas, tin plated over nickel on solder tails
Housing .....	Black PPS, flame retardant to UL94V-0
Current rating .....	0.5A
Proof voltage .....	500Vac
Contact resistance (max) .....	100mΩ
Insulation resistance (min) .....	1000MΩ
Operating temperature range .....	-25°C to +85°C

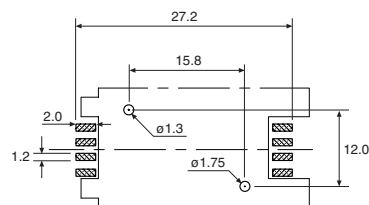
Type  
8 way

Manf. Part No. & anglia Order Code  
**TSIM08TE**

**Dimensions (mm)**



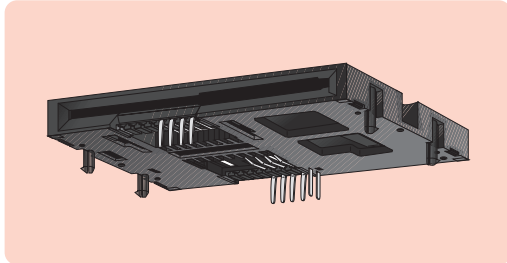
**Pad Pattern**



**TAICOM type TSC**



A range of standard type, through hole connectors designed for the insertion of smart cards in accordance with ISO 7810/7816. Available in 8 and 16 way, each version is fitted with a normally open end switch and has an industry recognised pin out. Contacts are self cleaning with a life expectancy of 100,000 card insertions. UL94V-0 moulded housings incorporate locating pegs to aid pcb alignment and card support. Ideal for a wide variety of applications including security, metering, data input and process control.



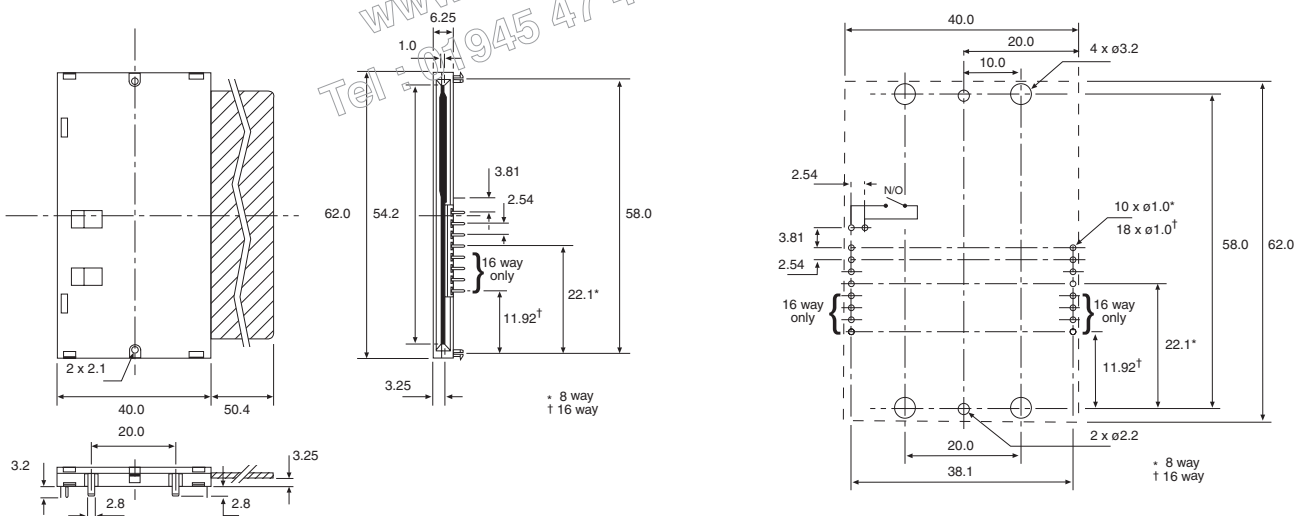
- ◆ Industry compatible
- ◆ Accept ISO 7810/7816 smart cards
- ◆ Choice of 8 way or 16 way
- ◆ Normally open end switch
- ◆ 100,000 card insertions
- ◆ Black flame retardant housings
- ◆ Designed for protected environments

Type	Manf. Part No. & anglia Order Code	Specification
8 way	TSC08	Contacts ..... Phosphor bronze, gold over nickel plated on contact areas, tin plated over nickel on solder pins
16 way	TSC16	Housing ..... Black Nylon 66, flame retardant to UL94V-0
		Current rating ..... 1A
		Proof voltage ..... 500Vac
		Contact resistance (max) ..... 20mΩ
		Insulation resistance (min) ..... 5000MΩ at 500Vdc
		Operating temperature range ..... -25°C to +85°C
		Insertions ..... 100,000

**FACTORY OPTION**  
 NORMALLY CLOSED END SWITCH  
 available to special order

TECHNICAL DATA  
 FOR REFERENCE PURPOSES ONLY  
 Anglia  
 info@anglia.com  
 Fax: 01945 47 48 49

**Dimensions (mm)**



**PCB Layout (top view)**