

### TAICOM type TD

### COMMERCIAL RANGE

A wide range of commercial 'D' subminiature connectors, comprising of plugs, sockets and matching hoods from 9 to 50 way. Constructed to high manufacturer's standards. Flame retardant glass filled polyester insulators and gold over nickel plated contacts (stamped and formed for economy) are housed in tin plated steel shells. Plugs have dimpled shells to ensure good conductivity for EMI/RFI shielding. Fully interchangeable with MIL-C-24308 types these products offer an inexpensive connector solution to applications where quality is to be maintained.

#### Specification

##### Materials & Finishes

Shells..... Steel, tin plated  
 Insulators..... Glass filled PBT  
 flame retardant to UL94V-0  
 Contacts..... Phosphor bronze or brass  
 gold over nickel plated  
 Hoods..... ABS, available with or  
 without nickel plating

##### Electrical

Current rating..... 5A (1A IDC)  
 Voltage rating..... 250Vac/dc  
 Proof voltage..... 1000Vac (500Vac IDC)  
 Contact resistance (max)..... 30mΩ  
 Insulation resistance (min)..... 1000MΩ at 500Vdc  
 Operating temperature range..... -55°C to +105°C

- ◆ Stamped & formed contacts
- ◆ Tin & dimple shells
- ◆ Gold over nickel contacts
- ◆ Flame retardant insulators
- ◆ Interchangeable with MIL-C-24308
- ◆ Plastic & metallised hoods available
- ◆ EMI/RFI shielding
- ◆ Very competitively priced

**HIGH DENSITY 'D'**  
 Refer to pages 164 & 165

**CABLE**  
**ASSEMBLY SERVICE**  
 available on this range  
 Refer to page 189

#### Dimensions (mm)

#### PLUGS

ALL TYPES: a, b, c, d, e

SOLDER & PCB (Straight): f, g

Mounting holes Ø 3.05

SOLDER: 15.8, 5.9, 1.0

PCB (Right angle) short American footprint: 18.4, 3.0, 2.84, 8.1

Pin size 0.64 □

with female screwlocks      with threaded inserts

PCB (Straight): 16.4, 4.3, Pin dia. 0.64

without threaded boardlocks      with threaded boardlocks

IDC: 21.4 assembled - with strain relief, 18.2 assembled

WAYS	a	b*	c*	d	e	f	g
9	30.8	16.9	8.4	12.6	25.0	19.3	10.7
15	39.1	25.3	8.4	12.6	33.3	27.5	10.7
25	53.0	39.0	8.4	12.6	47.0	41.3	10.7
37	69.3	55.4	8.4	12.6	63.5	57.7	10.7
50	66.9	52.8	11.1	15.4	61.1	55.3	13.6

\*Internal

#### SOCKETS

ALL TYPES: a, b, c, d, e

SOLDER & PCB (Straight): f, g

Mounting holes Ø 3.05

SOLDER: 15.8, 5.9, 1.0

PCB (Right angle) short American footprint: 18.4, 3.0, 2.84, 8.1

Pin size 0.64 □

with female screwlocks      with threaded inserts

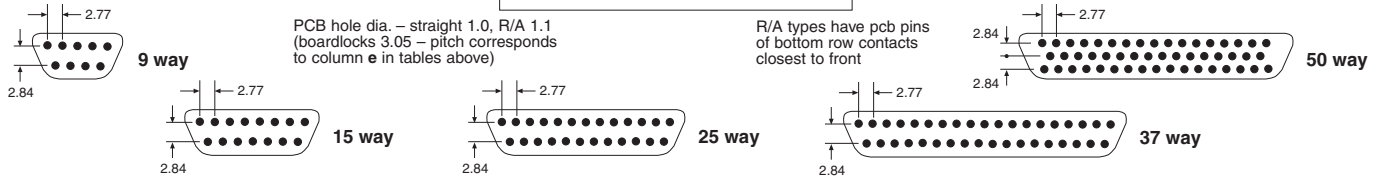
PCB (Straight): 16.4, 4.3, Pin dia. 0.64

without threaded boardlocks      with threaded boardlocks

IDC: 21.4 assembled - with strain relief, 18.2 assembled

WAYS	a	b	c	d	e	f	g
9	30.8	16.3	7.9	12.6	25.0	19.3	10.7
15	39.1	24.7	7.9	12.6	33.3	27.5	10.7
25	53.0	38.4	7.9	12.6	47.0	41.3	10.7
37	69.3	54.8	7.9	12.6	63.5	57.7	10.7
50	66.9	52.4	10.7	15.4	61.1	55.3	13.6

#### CONTACT LAYOUT/FOOTPRINT



**PLUGS**

**EXPANDED RANGE**

**SOCKETS**

Choice of rear termination with contacts gold over nickel plated.

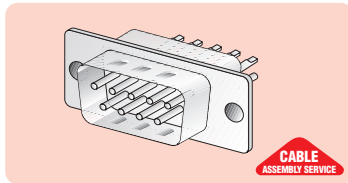
Choice of rear termination with contacts gold over nickel plated.

**Solder Bucket**

Tin plated shells with dimples. White insulators.

**Solder Bucket**

Tin plated shells. White insulators.

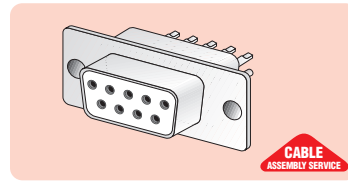


Type

- 9 way
- 15 way
- 25 way
- 37 way
- 50 way

Manf. Part No. & Anglia Order Code

- TD09MB
- TD15MB
- TD25MB
- TD37MB
- TD50MB



Type

- 9 way
- 15 way
- 25 way
- 37 way
- 50 way

Manf. Part No. & Anglia Order Code

- TD09FB
- TD15FB
- TD25FB
- TD37FB
- TD50FB

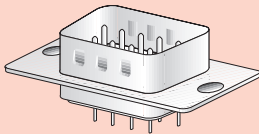
**PCB Mounting (Straight)**

Tin plated shells with dimples. White insulators. Choice of with or without 4-40 UNC threaded boardlocks.

**PCB Mounting (Straight)**

Tin plated shells. White insulators. Choice of with or without 4-40 UNC threaded boardlocks.

Without threaded boardlocks



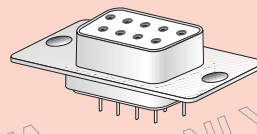
Type Without Boardlocks

- 9 way
- 15 way
- 25 way
- 37 way
- 50 way

Manf. Part No. & Anglia Order Code

- TD09MPS
- TD15MPS
- TD25MPS
- TD37MPS
- TD50MPS

Without threaded boardlocks



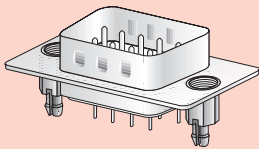
Type Without Boardlocks

- 9 way
- 15 way
- 25 way
- 37 way
- 50 way

Manf. Part No. & Anglia Order Code

- TD09FPS
- TD15FPS
- TD25FPS
- TD37FPS
- TD50FPS

With threaded boardlocks



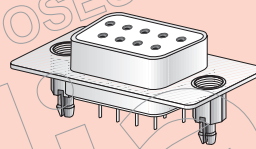
Type With Boardlocks

- 9 way
- 15 way
- 25 way
- 37 way
- 50 way

Manf. Part No. & Anglia Order Code

- TD09MPSC
- TD15MPSC
- TD25MPSC
- TD37MPSC
- TD50MPSC

With threaded boardlocks



Type With Boardlocks

- 9 way
- 15 way
- 25 way
- 37 way
- 50 way

Manf. Part No. & Anglia Order Code

- TD09FPSC
- TD15FPSC
- TD25FPSC
- TD37FPSC
- TD50FPSC

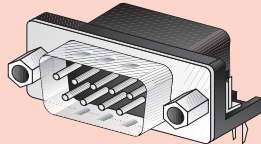
**PCB Mounting (Right Angle)**

Tin plated shells with dimples and grounding boardlocks. Black insulators. 8.1mm spacing from front row of pins to panel face. Choice of 4-40 UNC female screwlocks or threaded inserts.

**PCB Mounting (Right Angle)**

Tin plated shells and grounding boardlocks. Black insulators. 8.1mm spacing from front row of pins to panel face. Choice of 4-40 UNC female screwlocks or threaded inserts.

With female screwlocks



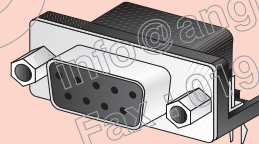
Type With Screwlocks

- 9 way
- 15 way
- 25 way
- 37 way

Manf. Part No. & Anglia Order Code

- TD09MPR
- TD15MPR
- TD25MPR
- TD37MPR

With female screwlocks



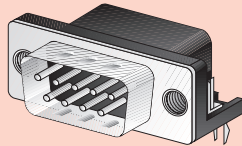
Type With Screwlocks

- 9 way
- 15 way
- 25 way
- 37 way

Manf. Part No. & Anglia Order Code

- TD09FPR
- TD15FPR
- TD25FPR
- TD37FPR

With threaded inserts



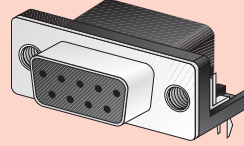
Type With Inserts

- 9 way
- 15 way
- 25 way
- 37 way

Manf. Part No. & Anglia Order Code

- TD09MPRC
- TD15MPRC
- TD25MPRC
- TD37MPRC

With threaded inserts



Type With Inserts

- 9 way
- 15 way
- 25 way
- 37 way

Manf. Part No. & Anglia Order Code

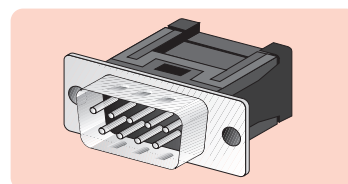
- TD09FPRC
- TD15FPRC
- TD25FPRC
- TD37FPRC

**IDC**

Tin plated shells with dimples. Black insulators. For direct termination to 0.050in. (1.27mm) pitch ribbon cable. Supplied complete with strain relief bracket. Suitable cable shown on page 173.

**IDC**

Tin plated shells. Black insulators. For direct termination to 0.050in. (1.27mm) pitch ribbon cable. Supplied complete with strain relief bracket. Suitable cable shown on page 173.

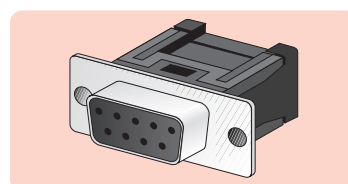


Type

- 9 way
- 15 way
- 25 way
- 37 way

Manf. Part No. & Anglia Order Code

- TD09MI
- TD15MI
- TD25MI
- TD37MI



Type

- 9 way
- 15 way
- 25 way
- 37 way

Manf. Part No. & Anglia Order Code

- TD09FI
- TD15FI
- TD25FI
- TD37FI

**HOODS**

see page 166 > > > > >